



Call for Art | Request for Qualifications

Washington State Arts Commission (ArtsWA) and
Department of Social and Health Services (DSHS)



Figure 1: aerial rendering of the new WSH Forensic hospital (courtesy HOK)

Project: Western State Hospital – Exterior Main Entry, New Forensic Hospital

Deadline: Wednesday, June 12th, 2024 at 4 PM Pacific Time

Budget: \$500,000 (inclusive of design, fabrication, installation & tax)

Description: This is an exciting opportunity for one or more artists/artist teams to create artwork for the main entry (exterior) of Western State Hospital's new forensic hospital, located in Lakewood, WA. The art selection committee seeks to commission works that are welcoming, large-scale, and respectful of Western State Hospital's progressive focus on trauma-informed care. Artists with lived experience with mental illness are especially encouraged to apply.

Questions? Contact Lauren Iida, Art in Public Places Project Manager, 360-485-1224, lauren.iida@arts.wa.gov

Project Overview

Washington state's vision of transforming behavioral health includes constructing a therapeutically designed hospital on the Western State Hospital campus with 350 beds to care for forensic patients in a modern facility. The hospital will also serve as a Forensic Center of Excellence and focus on providing state-of-the-art care for forensic patients, since the new forensic hospital will serve patients who enter care through the criminal court system. The new hospital will operate in an environment of care that supports safety, the delivery of evidence-based proven practices, and working hand in hand with local academic institutions to support research and innovation.



Figure 2: rendering of the new WSH Forensic Hospital main entry, looking northwest from sidewalk (courtesy HOK)

Call for Art

We seek artists or artist teams who have lived experience with mental illness¹ to design and create artwork for the main entry of Western State Hospital's new forensic hospital. Lived experience with mental illness can be firsthand experience, experience through someone you know, or experience through people or communities you've worked with. The chosen artist(s) should be able to design artwork that is culturally sensitive and considerate of the patient experience.

Washington state's vision of transforming behavioral health includes constructing a therapeutically designed hospital on the Western State Hospital campus with 350 beds to care for forensic patients in a modern facility. The new forensic hospital will serve patients who enter care through the criminal court system.

The main entry of the hospital will be a highly visible threshold used by visitors, staff, some patients, and will be able to be seen clearly from the busy main road in front and the heavily used public park across the street. The main entry artwork should create a welcoming gateway, marking an arrival or the start of a journey. It should be monumental in scale, harmonize with the existing architectural elements of the new buildings, and help convey an uplifting new public identity for this innovative healing facility.

The committee seeks artworks that will reflect on Western State Hospital's progress while honoring the trail which led them to where they are today, which includes hundreds of years of complex history.

Artworks should be soothing and respectful of Western State hospitals progressive focus on trauma-informed care. The committee is interested in artworks that could enhance hospital's design theme of "a walk in the park" which focuses on the patient's individual journey to healing and movement throughout the facility. Artworks will need to adhere to safety criteria appropriate to the general public.

Artists from Nisqually, Steilacoom, Puyallup, Cowlitz, Coast Salish, and/or the other tribes of the Pacific Northwest are encouraged to apply.

Budget

\$500,000 is the total budget for one or more large exterior artworks. The artwork budget is inclusive of design, travel, structural engineering, materials, fabrication, installation, artist fee, taxes, and all other associated project costs.

¹ The committee is looking for an artist that will be able to understand and relate to their patient population, and sensitively design artwork for them with awareness. Knowing that this can be personal and sensitive, we are not encouraging anyone to share anything in their application that they'd be uncomfortable sharing. Applicants do not need to disclose personal health details. Simply stating you have experience, and how you might address creating artwork for this population to demonstrate your sensitivity should suffice.

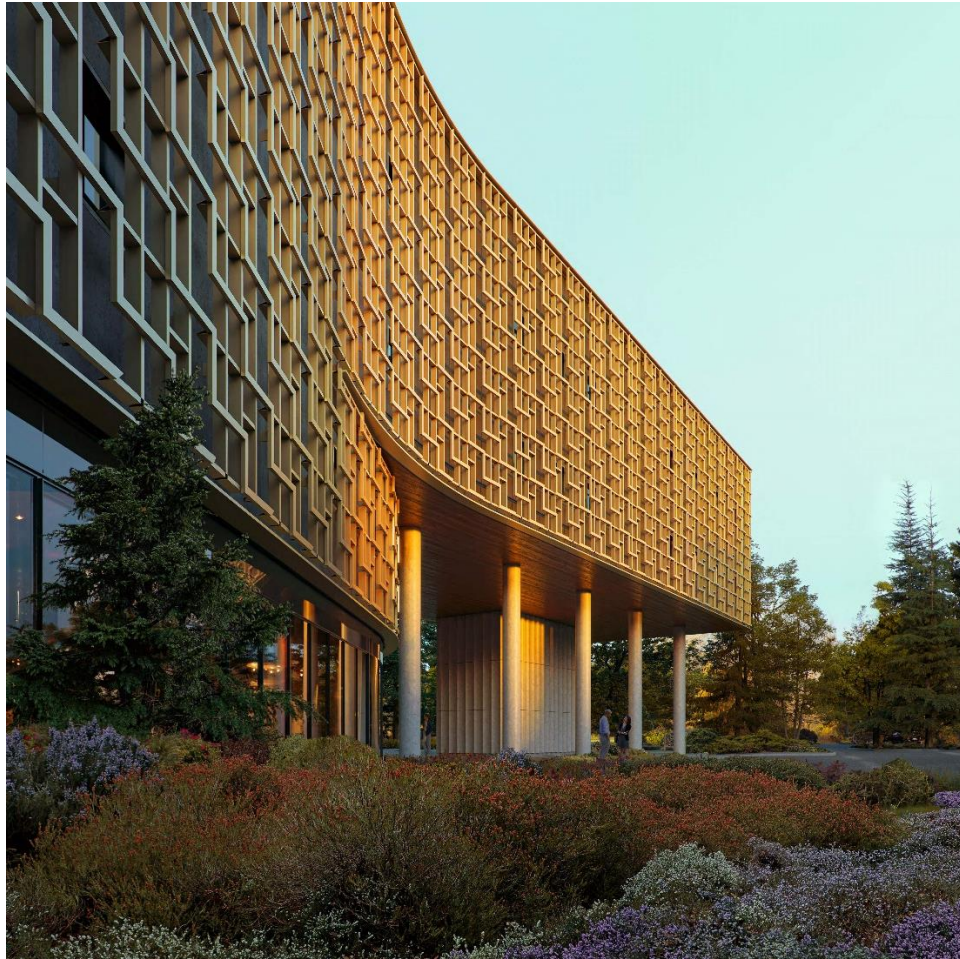


Figure 3: Looking east to the main entry from staff courtyard (courtesy HOK)

Eligibility

You are eligible to apply if you:

- Live in the United States or British Columbia
- Are not enrolled as a visual arts student as of June 2024
- Do not have an active project with ArtsWA
- Are not a staff or Board member of ArtsWA, DSHS, or WSH

We do not discriminate based on race, sex, religion, color, national origin, age, ancestry, disability, or gender identity.

How to Apply

Please prepare the below items and apply on [Submittable](#) by **Wednesday, June 12th at 4PM PDT**

- **statement of interest** (limit 250 words) that outlines your approach to public art and summarizes your interest in creating artwork for the main entry of Western State Hospital. Describe your experience with similar projects. Include what differentiates you, including your lived experience with mental illness.
- **brief biography or artist statement** (limit 250 words). Artist teams may submit a statement for each member.
- **8 images of past works**, preferably from within the past 5 years
- **brief descriptions (1-2 sentences) for each image**. Include title, dimensions, materials, date, location, budget/cost, and commissioning entity (if applicable).

Deadline: Wednesday, June 12th at 4 PM

To avoid technical problems, please submit well in advance of the deadline.

We will not accept late applications.

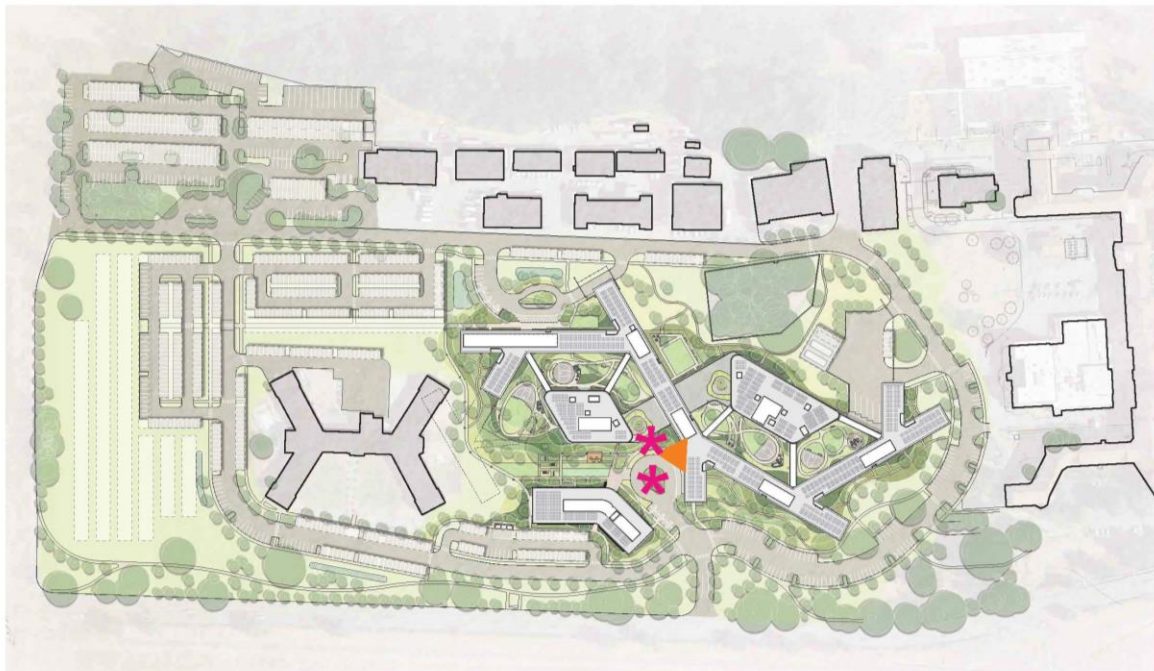


Figure 4: Site map indicating main entry potential artwork locations (courtesy HOK)

Art Selection Committee

WSH's Main Entry Art Committee consists of community members, staff, patients, administrators, and project architects. The committee will review applications and choose an

artist or artist team to design artwork for the main entry. Upon design approval, the artist or artist team will receive a commission contract to fabricate and install the artwork.

Selection Criteria

The Art Committee will consider whether your portfolio:

- Communicates a unique vision or perspective
- Shows a potential to engage or respond to its surroundings, or both
- Demonstrates technical skill and command in your chosen medium

They will also assess how each applicant's lived experience, art practice, and interests best match the artwork goals for the main entry based on your statements. The Art Selection Committee may opt to not select an artist from this submission process.

Commission Process

If selected, you will:

- design an artwork proposal for review and approval by ArtsWA staff, conservator, structural engineer, and the art committee
- travel to the project site up to 3 times during the proposal/design process to meet with the Art Committee and ArtsWA project manager (meetings may be held remotely)
- meet with the building design team to coordinate artwork integration
- work within the stated project budget
- obtain registration as a state vendor and adhere to applicable state permitting and licensing requirements, including contracting and the paying of Prevailing Wages
- enter and fulfill the requirements of contracts with ArtsWA, and pay applicable taxes

ArtsWA will commission the artworks. They will become part of the State Art Collection. You'll coordinate installation through ArtsWA and DSHS/WSH. You can view sample [contracts here](#).

Timeline

- May 17, 2024: distribute RFQ
- June 12, 2024: applications due on Submittable
- July 24, 2024: selected artist(s) notified (*Committee may decide to interview 2-3 finalists before making selection*)
- Late Summer 2024: artist(s) site visit
- Aug – Dec 2024: design phase in collaboration with architects and design team
- Feb 2025 – Dec 2026: fabrication phase
- 2027: anticipated artwork installation

Additional Resources & Materials

- [Trauma Informed Material & Design Guidelines](#)

- [New forensic hospital FAQ](#)
- [ArtsWA's Art Plan for the new forensic hospital](#)
- [ArtsWA's Public Artist Handbook](#)
- [ArtsWA's Material and Fabrication Handbook](#)

For additional information

- Lauren Iida, AIPP Project Manager, lauren.iida@arts.wa.gov, 360-485-1224
- Marissa Laubscher, AIPP Sr Project Manager, marissa.laubscher@arts.wa.gov, 360.252.9974
- Adetola Abatan, AIPP² Project Manager, adetola.abatan@arts.wa.gov, 360-468-0889

² The Art in Public Places (AIPP) program purchases and cares for artworks in state buildings, colleges, universities, and schools throughout Washington. AIPP is uniquely positioned to advance and support art and artists across the state. Our goal is to build and care for a State Art Collection that is impactful, accessible, and valued. We seek lasting artworks that reflect Washington's diverse communities.