

# CALL FOR ARTISTS / REQUEST FOR QUALIFICATIONS (RFQ)

Irving R. Newhouse Building  
Capitol Campus, Olympia, WA



Concept rendering only (Miller Hull Partnership)

Washington State Arts Commission (ArtsWA) in partnership  
with the Department of Enterprise Services (DES)

**Submissions Due:** Tuesday, June 14, 2022, 4 PM (Pacific)  
**Artwork Budget:** \$245,000 (inclusive of design, fabrication, installation, and tax)

## Overview

This is an exciting opportunity for an artist or artist team to incorporate artwork into the new Irving R. Newhouse Building, commissioned through ArtsWA's Art in Public Places program in partnership with DES. The building is currently in design, with construction scheduled to be completed at the end of 2024.

## Contact

**Mike Sweney**, Art in Public Places program manager: 360.228.4080, [mike.sweney@arts.wa.gov](mailto:mike.sweney@arts.wa.gov)

## PEAR Statement

ArtsWA and DES are committed to Washington's vision of a Pro-Equity Anti-Racist (PEAR) state. To honor this commitment, we strongly encourage Black, Indigenous, and People of Color (BIPOC) candidates to apply. The Art Committee welcomes artistic visions that speak to the cultures, experiences, and contributions of these communities.

## Vision for the art

Through a process managed by ArtsWA, the Art Committee will select an artist or artist team to create public art for the Newhouse Building or its environs. Sited on the traditional lands of Coast Salish tribes including Squaxin, Nisqually, Cowlitz, and Chehalis, there is a strong interest in honoring the Indigenous Peoples' connection to this region. Other possible sources of inspiration include honoring the contributions of immigrants and other underrepresented peoples (see PEAR Statement), the natural beauty of Washington, its complex history, and the dignity and importance of public service. Some architectural elements may be salvaged from the existing building and available to be repurposed as part of the artwork. Artwork may be sited within or outside the building, or both, and the selected artist will have the opportunity to work with the Newhouse design team to consider integrated artwork(s).

## Budget

The selected artist will receive a **\$25,000** design contract that includes travel and stamped, structural engineering. Upon design approval, they will receive a commission contract of **\$220,000**, inclusive of all costs related to fabrication and installation, including sales tax and contingency.

The Newhouse Art Committee may invite up to three finalists to develop conceptual designs for artwork, including identifying the site(s), concept, scale, and medium(s). Each will receive \$3,000, inclusive of travel for a site visit and/or concept presentation (if required).

## Submissions

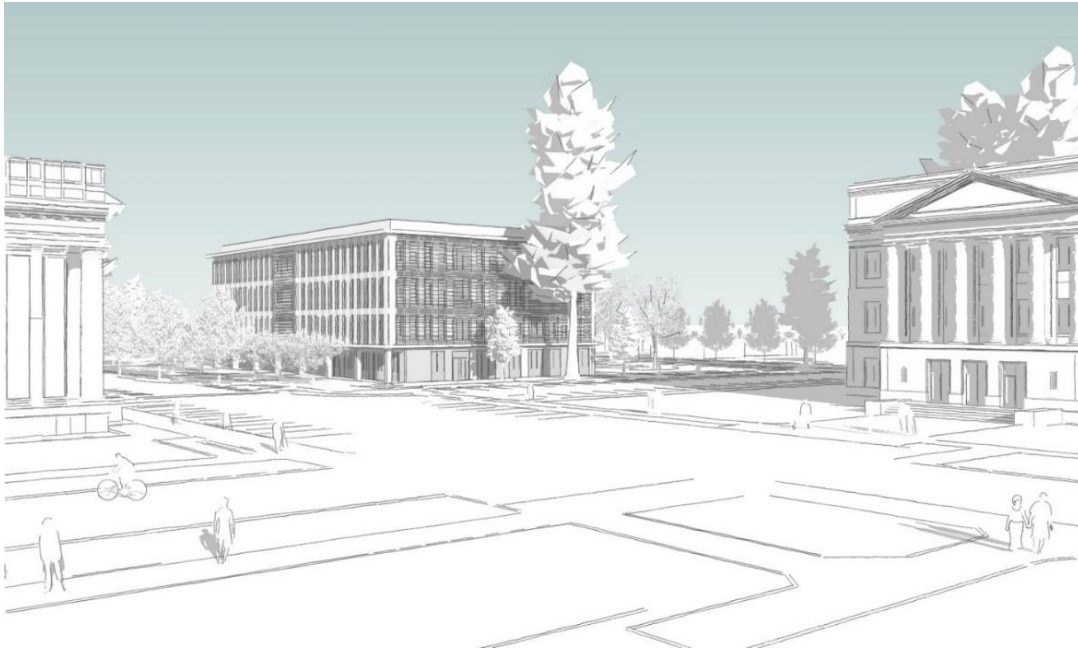
All materials are due by **4pm, Tuesday, June 14, 2022**, through [ArtsWA's Submittable site](#). If you are unable to submit electronically, contact us to discuss possible accommodations.

## Eligibility

You must be an established artist residing in the United States or British Columbia. Washington State artists and those with a deep connection to the state are strongly encouraged to apply. Neither ArtsWA nor DES discriminate on the basis of race, sex, religion, color, national origin, age, ancestry, disability, or gender identity. DES staff and artists with current ArtsWA public art contracts are ineligible.

## About the Newhouse Replacement Project

As part of the [Legislative Campus Modernization](#) (LCM) project, the design process is underway for a new Irving R. Newhouse building on the Capitol Campus in Olympia. The existing Newhouse Building, built in 1934, houses the state senate offices. Current structural and safety issues necessitate its replacement. Comprised of state agency and legislative buildings including the State Capitol and the Temple of Justice, and nearly 500 acres of landscaping, the Campus was designed by Wilder and White and the Olmsted Brothers.



Concept rendering only (Miller Hull Partnership)

Design development is underway and is being led by Miller Hull Partnership. Hoffman Construction Company of Washington is under contract to perform General Contractor/Construction Manager (GC/CM) services.

### Selection process

The Art Committee is made up of local stakeholders including staff, administrators, community members, and the Newhouse Building project design team, facilitated by ArtsWA. The Art Committee will review submitted materials of all applicants and invite up to three finalists to develop and present conceptual designs for artwork. From the finalists, they will select an artist or artist team to create a formal proposal for the Newhouse Building. Upon proposal approval, the artist will receive a commission contract for fabrication and installation.

Using the criteria below, the Art Committee will review and consider whether your submission:

- **communicates a unique vision or perspective**
- **reflects the State's commitment to Pro-Equity, Anti-Racist (PEAR) values**
- **shows a potential to engage or respond to its surroundings, or both**
- **demonstrates skill in technique**
- **relates to the vision for the Newhouse Building artwork**

## Submission materials

Please prepare and enter the following through [Submittable](#):

1. **statement of interest** (limit 250 words) outlining your approach to public art and summarizing your interest in this project. Describe any experience with projects of a similar scope and include anything that might help us differentiate you as a candidate.
2. **brief biography or artist statement** (limit 250 words). Artists working collaboratively may submit a statement for each member.
3. **8 images of past works**, preferably created within past 5 years. (Horizontal orientation displays best.)
4. **brief descriptions (1-2 sentences) for each image**. Also include title, dimensions, materials, date, location, budget/cost, and commissioning entity (if applicable).
5. **three references** from past projects. Include name, title, and contact information, PDF or DOC.

## If selected, you will

- design and propose an artwork for review and approval by ArtsWA staff, professional conservator, structural engineer, and the Art Committee
- travel to the project site up to three times during the proposal/design process to meet with the Art Committee and ArtsWA project manager (some meetings may be held remotely)
- be available to meet with building design team to coordinate artwork integration
- work within the fixed budget
- maintain registration as a Washington State vendor and adhere to applicable state permitting and licensing requirements, including those relating to contracting and the paying of Prevailing Wages
- enter into contracts with ArtsWA and fulfill those requirements, including paying applicable taxes

## Commission and contracts

The artwork will be commissioned through ArtsWA and will become part of the State Art Collection. Installation will be coordinated through ArtsWA and DES. Sample proposal and [commission](#) contracts can be found on ArtsWA's [website](#).

## Anticipated timeline

- RFQ distributed: May 23, 2022
- all materials due: Tuesday, June 14, 2022, 4:00 PM Pacific Time
- Art Committee review: June 17-July 7, 2022
- second/final art committee review: mid-July, 2022
- notification to selected artist: mid-late July 2022  
(2-3 finalists may be selected to create concepts for review in September)
- design: September 2022 through October 2023
- fabrication: November 2023 through September 2024
- anticipated artwork installation: Nov/Dec 2024 (dependent on building construction)

## Due date and time: Monday, June 14, 2022, 4PM (Pacific)

Applications through [Submittable](#). If you do not have an account, sign-up is free.

To avoid technical problems, please submit well in advance of the deadline.

**Late submittals will not be accepted.**

## ArtsWA Art in Public Places Vision Statement

Art in Public Places is uniquely positioned to advance and support art and artists across Washington. Our goal is to build and care for a State Art Collection that is impactful, accessible, and valued. We seek lasting artworks that reflect Washington's diverse communities.

ArtsWA and its Art in Public Places program are committed to Washington's vision of a Pro-Equity Anti-Racist (PEAR) state.