



---

WASHINGTON STATE  
ARTS COMMISSION



2018 Art in Public Places  
Annual Legislative Report

Prepared for the Office of Financial Management and  
the Fiscal Committees of the Washington State Legislature

---

Karen Hanan, Executive Director  
Washington State Arts Commission

# Table of Contents

Letter from Karen Hanan, Executive Director.....	p. 1
Art in Public Places Introduction and Overview .....	p. 3
Review Findings (a-g) .....	p. 6
Study Group Convenings .....	p. 9
Closed Projects FY 2018 .....	p. 13
Artwork Expenditures by County FY 2018 .....	p. 27
Expenditures: K-12 Projects by County Map.....	p. 33
Expenditures: Higher Education Projects by County Map.....	p. 34
Expenditures: State Agency Projects by County Map.....	p. 35
Expenditures: Funding by Agency Type Charts .....	p. 36
AIPP Administrative Costs .....	p. 37
AIPP Collection Care Costs .....	p. 39
My Public Art Portal Costs .....	p. 44
State Art Collection under Contract as of August 16, 2018 .....	p. 47

All images within this document are courtesy of the artists or ArtsWA.



STATE OF WASHINGTON  
**WASHINGTON STATE ARTS COMMISSION**  
*711 Capitol Way S, Suite 600, PO Box 42675 Olympia, WA 98504-2675*  
*(360) 753-3860 • FAX (360) 586-5351*

September 1, 2018

To the Office of Financial Management and the Fiscal Committees of the Legislature:

Please find enclosed this year's annual report offering a comprehensive review of the operations and achievements of the Art in Public Places program.

The Washington State Arts Commission is justifiably proud of the program, one of the largest and most applauded in the country, and we welcome the opportunity to share it more completely with you.

Please do not hesitate to ask if you have questions regarding any aspect of the report. We will be happy to respond.

Sincerely,

A handwritten signature in black ink, appearing to be "K. Hanan", with a long horizontal flourish extending to the right.

Karen J. Hanan  
Executive Director  
360-586-2423. [karen.hanan@arts.wa.gov](mailto:karen.hanan@arts.wa.gov)



# Washington State Arts Commission

## Art in Public Places Program

### Introduction

This report covers the findings of the study group appointed by the Washington State Arts Commission (ArtsWA) to review operation of the one-half of one percent for works of art purchased or commissioned as required by [RCW 28A.335.210](#), [28B.10.027](#), and [43.17.200](#). As required in the current capital construction budget, this report includes the following:

- (a) Projects purchased or commissioned per biennium;
- (b) Partner agencies;
- (c) Funding sources by fiscal year;
- (d) Artwork costs;
- (e) Administrative costs;
- (f) Collection care costs; and
- (g) Project status.



Todd Benson, *Infinite Humanity* (detail)  
2017. Columbia Basin College, Pasco.

### Program Overview

ArtsWA's Art in Public Places program (AIPP) facilitates the acquisition of, and care for, artwork at the state's K-12 public schools, colleges, universities, and state agencies, enhancing and activating the built environment. Since its inception in 1974, AIPP regularly adjusts its practices to respond to the changing needs of its partners and the evolving field of public art. AIPP is charged with building and managing a collection of professionally-created and publicly-accessible art as a cultural legacy for all citizens. In concert with that goal is the obligation to be transparent, responsibly manage public funds, and effectively partner with all stakeholders. While over half the nation's states have public art programs, AIPP is viewed as a leader because of its history, diversity, inclusive acquisition processes, and proactive collection care policies.

Works acquired through AIPP become part of the State Art Collection, which is publicly owned, publicly sited, and publicly selected. With over 4,700 works, Washington is home to one of the oldest and largest state public art collections. Notable local, regional, and national artists are represented in the collection holdings.

## Acquisitions

Artwork acquisitions managed by AIPP are funded through Washington's capital construction budget, using a formula of one-half percent (0.5%) of the state's portion of construction costs for new buildings. The art allocation for state agencies and public schools applies only to new construction. Universities and colleges also receive public art funding for renovation projects exceeding \$200,000. Capital funds support the AIPP Program Manager, 2 Project Managers, and the Program Coordinator (4 FTEs), as well as travel and other administrative costs.

## Collection Care

As per [RCW 43.46.095](#), acquired artworks become part of the State Art Collection, and ArtsWA is responsible for the inventory, restoration, and conservation of the collection. From its capital allotments, AIPP is currently authorized to expend up to \$150,000 per biennium for the care of the Collection, and emergent care and more extensive repairs are addressed as funding is available. Salaries and benefits for the Collections Manager and Conservation Technician (1.8 FTEs), and other costs supporting their activities, are funded through the State's General Fund.



Peter Reiquam, *Bumper Crop*, 2017. Conway K-8, Conway.

## My Public Art Portal

Supported through the State General Fund, My Public Art Portal is a searchable, online database of the State Art Collection. Funds pay for one Project Manager and one Writer/Researcher (1.5 FTEs), and all associated project costs (travel, software, office, and equipment costs). The Portal features works from the State Art Collection and includes interactive features for educators, students, and the general public.





Catherine Woods, *Flying* (detail), 2017. Crestline Elementary, Vancouver.

## Review Findings

### (a) Projects purchased or commissioned per biennium

Most acquisitions in the State Art Collection are site-integrated public works projects. During artwork design, locally-formed committees select artists to conceive, fabricate, and install artworks within state buildings or campuses. From committee orientation through artwork installation, public art purchases generally take 2-4 years to complete, and span multiple fiscal years or biennia.

During year one (FY2018) of the 2017-19 biennium, AIPP closed, or **purchased, 24 projects**. The 24 closed projects yielded a total of 39 separate artworks. For more details on purchases, please refer to page 13 of this report (Closed Projects FY 2018).

In FY2018, AIPP entered into **24** commission contracts with artists at the following locations:

- Alderwood Middle School, Edmonds (artist William Frymire)
- Auburn High School, Auburn (artist Alex Hirsch)
- Central Washington University, Ellensburg (artist Ilan Averbuch)
- Colton School, Colton (artists Alexis Gregg and Tanner Coleman)
- Dept. of Enterprise Services, Helen Sommers Building, Olympia (artist Beliz Brother)
- Dept. of Transportation – North Central Region, Wenatchee (artist Julie Berger)
- Genesee Hill Elementary, Seattle (artist Sumi Wu)
- Kenmore Middle School, Kenmore (artist James Pridgeon)
- Lake Stickney Elementary, Mukilteo (artist Adam McIsaac)
- Lewis and Clark Elementary, Richland (artist Jean Bradbury)
- Mullan Road Elementary, Spokane (artist Ed Kroupa)
- NEWTECH Skills Center, Spokane (artist Evan Blackwell)
- North Creek High School, Bothell (artist Ries Niemi)
- North Mason High School, Belfair (artist Matt Babcock)
- Ocosta Elementary, Westport (artist David Eisenhour)
- Olympia Regional Learning Academy, Olympia (artist Diane Hansen)
- Olympic College, Bremerton (artist Susan Point)
- Pierce College, Lakewood (artists Ene Osteraas-Constable and Scott Constable)
- Robert Eagle Staff Middle School, Seattle (artist Kathleen Frugé Brown)
- Silverdale Elementary, Silverdale (artist Frank Samuelson)
- South Seattle College, Seattle (artist Micajah Bienvenu)
- Washington Elementary, Sunnyside (artist Ross Beecher)
- Washington Elementary, Wenatchee (artist Elizabeth Gahan)
- Western Washington University, Bellingham (artist Sarah Sze)

More details regarding these commissions can be found on page 47 of this report (State Art Collection Currently under Contract As of August 16, 2018) or, when the project has also been completed within FY 2018, on page 13 (Closed Projects FY 2018).



## (b) Partner agencies

ArtsWA partners with K-12 public schools, community and technical colleges, state universities, and state agencies. In the case of K-12 public schools, ArtsWA initially partners with the Office of the Superintendent of Public Instruction (OSPI), which manages K-12 capital artwork funds. ArtsWA enters into Interagency Agreements with partner agencies hosting State Art Collection artworks.

In fiscal year 2018, ArtsWA partnered with:

- 6 **community/technical colleges** on 6 projects;
- 4 **universities** on 8 projects;
- 3 **state agencies** on 4 projects; and
- 54 **public schools** (within 36 school districts) on 54 projects

The projects above took place in 20 counties. Detailed information regarding expenditure amounts and partner agencies, and maps indicating project distribution by county, can be found in pages 27-36 of this report (Artwork Expenditures by County in FY 2018).

## (c) Funding sources by fiscal year

All public school artwork projects are funded through the capital funds appropriated to OSPI. Through K-12 Pooled Funds, a selection panel designates projects (with approval from the ArtsWA Board) that are then paid for through the combined pool; they are not matched directly to a school construction project. In this report's section "Artwork Expenditures by County in FY 2018" on page 27, the "Project Location" is the school that received the project through the application process. ArtsWA tracks projects with an AFRS code associated with the combined amount, not the allocation as determined by OSPI.

Information about partner agency projects and expenditures can be found on page 27 of this report (Artwork Expenditures by County in FY 2018).

## (d) Artwork costs

For the period covering fiscal year 2018, AIPP expended a total of **\$1,902,282** in artwork costs, exclusive of collection care (conservation and maintenance) costs. These amounts were reimbursed to ArtsWA via partner agency capital allotments.

Information regarding all partner agency projects and expenditures begins on page 27 of this report (Artwork Expenditures by County in FY 2018).



Paul Sorey, *Flower* (detail), 2017. Tahoma High School, Maple Valley.

## (e) Administrative costs

In FY18, the Art in Public Places program included eight staff members (7.3 FTEs). Of these, 3.3 FTEs (Collections Manager, Conservation Technician, Portal Project Manager, and Portal Writer/Researcher) were funded through the general fund. For the purposes of this report, costs for

collection activities and My Public Art Portal are included under “(f) Collection care costs.” All other capital-funded program administrative costs—including salaries, benefits, and travel expenses—totaled **\$347,589** in FY18, and are included on page 37 of this report (AIPP Administrative Costs).

Art in Public Places project managers regularly travel statewide to meet with local art selection committees. Local community input is key to the success of the program and the works purchased for the State Art Collection.

### (f) Collection care costs

The total expended in fiscal year 2018 for collection care was **\$259,370**, including the salaries and benefits for the Collections Manager and Conservation Technician (1.8 FTE). \$84,715 of this amount was reimbursed through capital reimbursements. The allotted total for fiscal year 2019 is \$253,721. As per the current capital budget, ArtsWA is authorized to spend up to \$150,000 per biennium for the maintenance or conservation of works in the State Art Collection.

For fiscal year 2018, the total expended for My Public Art Portal, the public website for the State Art Collection, was **\$153,401**, including salaries and benefits for the Portal Manager and Researcher positions (1.5 FTEs). Anticipated costs for fiscal year 2019 are \$152,500. For details regarding collection care costs, please refer to page 39 of this packet (AIPP Collection Care); for Portal cost details, see page 44 (My Public Art Portal).

### (g) Project status

As of August 16, 2018, there were **55 projects under contract**. Of these, **32 were in design** and **23 were in fabrication**. These projects represent 18 Washington counties.

For more information related to these projects, please see page 47 (State Art Collection Currently under Contract As of August 16, 2018).



Norie Sato, *Seed Clouds* (detail), 2017. University of Washington, Seattle.

# AIPP Study Group Convenings

## Overview

As per the current state Capital Budget, ArtsWA convened a study group to review the Art in Public Places program. Consistent with previous years, AIPP scheduled two meetings and presented the option of a third, if necessary.

## Summary of Meeting 1: July 19, 2018

Participants: Cheryl Bivens, Capital Budget Analyst, SBCTC  
Randy Newman, Business Manager, School Facilities Capital Projects, OSPI  
Marygrace Goddu, Cultural Resources Manager, DES  
Diann Lewallen, Small Agency Financial Services, DES  
Anna-Maria Shannon, Assoc. Director, Schnitzer Museum of Art, WSU (via phone)

ArtsWA: Mike Sweney, AIPP Program Manager  
Karen Hanan, Executive Director  
Janae Huber, AIPP Collections Manager  
Deane Shellman, AIPP Coordinator

Absent: Randy Newman, Business Manager, School Facilities Capital Projects, OSPI

Meeting was convened at 2:00pm at ArtsWA's main conference room.

### AIPP overview.

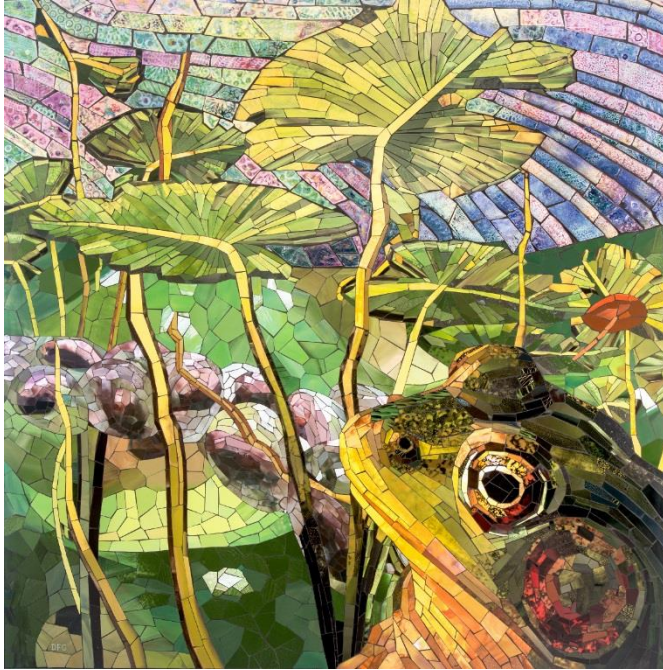
Meeting started with introductions and an overview of the AIPP program (via PowerPoint) with conversation. Discussed changes to program, including new Capital Budget language that increases the Collections Care cap and allows all state agencies to “borrow” 10% of anticipated artwork funding during design. There were several clarifying questions from the Study Group.

### Concerns with AIPP?

Sweney asked for initial program feedback, whether there are problems or concerns the Group wished to discuss at the meeting. There were only a few comments and no stated problems.

### AIPP Funding.

Reiterating what was in the PowerPoint presentation regarding the capital budget: 10% during design applies to all state agencies, not just higher education (this was changed in the supplemental budget). Bivens reported that SBCTC is already taking advantage of this. She asked how AIPP is communicating with colleges to get started during design; Sweney acknowledged that AIPP is not currently reaching out to our partners, for capacity issues, though we have started one project at Spokane Falls Community College and are preparing to begin another at Grays Harbor. Both conversations were initiated by the colleges.



Dixie Friend Gay, *Reality's Illusion* (1 of 7 panels), 2017.  
Jackson Park Elementary, Bremerton.

The amount of capital dollars AIPP may expend on artwork conservation was increased from \$100K to \$150K per biennium. Sweney stated that recent capital budget language omits 2 of 3 partner agency RCW's in reference to where ArtsWA may spend these funds and is working rectify this oversight.

There is currently a 6 year spending limit on capital artwork funds. Normally, this does not present a problem but in some cases it can be debilitating. For example, OSPI has granted funds to school districts for the addition of new classrooms for K-3 students. There is no clear timetable for expending those funds and OPSI is unable to commit the artwork portion to AIPP until districts close their projects and report on

how the money was spent, which could be years from now. ArtsWA is hoping to eliminate or alter this 6 year deadline.

Huber reported that she is currently drafting a Decision Packet to add new conservation staff, similar to the DP that ArtsWA submitted for the FY18 supplemental budget. (Several members of the AIPP Study Group wrote letters of support for last year's submittal. Although that effort was unsuccessful, ArtsWA will submit again.) At 44 years old, Washington's State Art Collection is one of the largest and most diverse. There is a considerable amount of conservation work needed due, in large part, to deferred or neglected maintenance by our partner agencies. Huber discussed changes in the DP from last year, including additional FTEs to establish stronger relationships with partner agencies to assist with or perform much-needed maintenance.

Huber stated that ArtsWA is working to increase the capital budget's collection care cap to \$200K, as well as ensure continued funding for My Public Art Portal through the General Fund.

Hanan discussed her efforts, including advocating for ArtsWA's ability to receive and manage art funds upon appropriation (with is supported by our partners); a better accounting to ArtsWA of all state agency capital appropriations for artwork; and determination that the 1/2-for-art formula applies to design. Should ArtsWA be successful in receiving artwork funds beginning during design, the capital language allowing agencies to "borrow" 10% during design would be moot.

#### Other "wish list" items.

Sweney discussed changing the billing procedure for administrative costs. Currently, SAFS bills our partner agencies 50% at the start of a project, 50% at close. Billing more often – quarterly? – would better reflect the expenses incurred by ArtsWA as projects progress.



A standing item is the need for ongoing communication with partner agencies: receiving notices of available and/or expiring funds; performing maintenance; notifying AIPP of artwork concerns; meetings with key administrators. Sweney encouraged Study Group members to make suggestions and alert AIPP of opportunities to engage with their agencies.

Next meeting. August's meeting agenda will focus on a review of the seven (a-g) items specified in the capital budget. AIPP staff reported that FY2018 projects were in the process of being closed, so a review during Meeting 1 of completed projects and expended funds was premature. Additionally, the study group will continue discussions on topics introduced at the first meeting. Any unresolved concerns after August's meeting may be addressed at a third meeting, which is currently optional.

2017 report. The group discussed the changes in 2017 from 2016 that were inspired by conversations during the 2017 Study Group meetings. There was overall satisfaction that the report was well-presented and the information clearly-articulated. Newman, who was not in attendance, asked Esmond to request that AIPP add a chart indicating distribution of artwork funds. Relatedly, Goddu suggested a "highlights" paragraph (or graphic) at the beginning of every numbered chapter, to give readers an overview of its contents.

Next meeting date. Identified August 16 for second meeting (confirmed 7/23/18)

Meeting was adjourned at 3:20pm.



Garth Edwards, *Things to Consider* (detail), 2017.  
Union Ridge Elementary, Ridgefield.

## Summary of Meeting 2: August 16, 2018

Participants: Cheryl Bivens, Capital Budget Analyst, SBCTC  
Randy Newman, Business Manager, School Facilities Capital Projects, OSPI  
Diann Lewallen, Small Agency Financial Services, DES  
Anna-Maria Shannon, Assoc. Director, Schnitzer Museum of Art, WSU (via phone)

ArtsWA: Mike Sweney, AIPP Program Manager  
Karen Hanan, Executive Director  
Janae Huber, AIPP Collections Manager

Absent: Roen Esmond, Disbursement Officer, School Facilities Capital Projects, OSPI  
Marygrace Goddu, Cultural Resources Manager, DES

Observing: Darrell Jennings, Office of Financial Management Capital Budget Assistant

Meeting was convened at 2:00pm at ArtsWA's main conference room.

Overview of July 19 meeting. The study group reviewed notes from the first meeting and staff invited additional input. Huber explained more fully the Decision Packet she is preparing for the 2019-21 biennium for additional Collections staff, discussing existing challenges and the proposed solution sought with the request. The group briefly discussed a potential shift to billing more often for program administrative funds, and there was no concern from Newman (OSPI) or Bivens (SBCTC).

Reviewed draft of 2018 report. The study group reviewed drafts of all sections of the 2018 annual report. AIPP staff explained that the close of FY18 is nearly complete, but some numbers will need to be slightly adjusted and/or confirmed. Also, the AIPP database-generated report was unable to capture projects with contracts written in the second half of FY 2018 (January – June 2018); this will be corrected. The group members will have a chance to review the final draft prior to its submission.

Several members offered suggestions for formatting and clarity that will be incorporated in the final version. Some examples include:

- Changing orientation of all pages to be vertical/portrait (from horizontal/landscape).
- Providing a breakdown of expenditures by county on the partner agency maps.
- Clarifying FTE count on spreadsheet in AIPP Administrative Costs section.

Looking at the map showing K-12 Expenditures in FY 18, Jennings asked why there were no K-12 projects in Pierce County. Sweney explained that we are generally busy in that county but this year was just an anomaly. There is one project in progress, but there were no funds expended in FY 2018; that project is captured elsewhere in the report (State Art Collection under Contract section).

Sweney handed out a draft of charting graphics he intends to incorporate into the report.

Shannon commented that she was enjoying the report draft and is impressed by the statewide reach and scope of the program.



Wrap up and next steps.

Committee agreed that an additional in-person meeting was not necessary, but welcomed the opportunity to review the final draft prior to its submission. Staff will distribute the draft via email the week of September 4, allowing for edits, if necessary, before the September 15<sup>th</sup> deadline.

Meeting 2 was adjourned at 3:00pm.

Juan Alonso-Rodriguez, *Hoody*, 2017. Renton Technical College.



## Closed Projects FY 2018

The list below, sorted by county, reflects public art projects that were completed (purchased) during fiscal year 2018 (July 1, 2017 through June 30, 2018). The Artwork cost is the total amount expended on the project, not inclusive of AIPP administration. The Artwork Cost includes design, engineering, fabrication, subcontractors, transportation, installation, and other related costs. Please contact AIPP staff for more information on these projects.

### Benton County

---

Partner Agency: Richland School District  
Hosting Site: Marcus Whitman Elementary  
Installation date: 8/24/2017  
Artwork cost \$ 60,000.00

Artist: Sean Healy and Joe Thurston  
Title: *Vista*  
Medium: Wood and colored pencils  
Dimensions: 5 ft 6 in x 25 ft 7 in x 2 in



### Chelan County

---

Partner Agency: Department of Transportation  
Hosting Site: Department of Transportation - Wenatchee  
Installation date: 4/6/2018  
Artwork cost \$ 31,452.13

Artist: Julie Berger  
Title: *Echo-Round*  
Medium: Weathering steel, aluminum, powder-coating  
Dimensions: 14 ft 8 in x 16 ft 6 in x 16 ft 6 in (overall)



## Clark County

---

Partner Agency: Evergreen School District  
Hosting Site: Crestline Elementary School  
Installation date: 11/22/2017  
Artwork cost \$ 77,500.00

Artist: Catherine Woods  
Title: *Flying*  
Medium: Carved, printed, and painted urethane, wood  
Dimensions: 12 ft x 20 ft x 30 in



Partner Agency: Ridgefield School District  
Hosting Site: Union Ridge Elementary  
Installation date: 8/25/2017  
Artwork cost \$ 45,000.00

Artist: Garth Edwards  
Title: *Things to Consider*  
Medium: Aluminum  
Dimensions: 20 ft x 342 ft x 1 in (overall)



Partner Agency: Ridgefield School District  
Hosting Site: South Ridge Elementary  
Installation date: 11/3/2017  
Artwork cost \$ 45,000.00

Artist: Stuart Nakamura  
Title: *Confluences*  
Medium: Stainless steel, granite, concrete  
Dimensions: 9 ft 4 in x 4 ft 9 in x 2 ft 8 in (each)



## Franklin County

---

Partner Agency: Columbia Basin College  
Hosting Site: Columbia Basin College  
Installation date: 9/1/2017  
Artwork cost \$ 46,280.17  
Artist: Todd Benson

Title: *Infinite Humanity*  
Medium: Acrylic paint  
Dimensions: 35 ft x 170 ft



## Grant County

---

Partner Agency: Warden School District  
Hosting Site: Warden Elementary/Middle/High School  
Installation date: 10/18/2017  
Artwork cost \$ 60,000.00

Artist: John Davis  
Title: *Sprouts*  
Medium: Painted stainless steel  
Dimensions: Overall dimensions 13 ft x 7 ft 11 in x 6 ft 5 in



## King County

---

Partner Agency: South Seattle College  
Hosting Site: South Seattle College  
Installation date: 6/18/2018  
Artwork cost \$ 78,024.69

Artist: Micajah Bienvenu  
Title: *Enlighten*  
Medium: Stainless steel  
Dimensions: 25 ft x 5 ft x 5 ft



Partner Agency: Vashon Island School District  
Hosting Site: Vashon Island High School  
Installation date: 12/29/2017  
Artwork cost \$ 125,000.00

Artist: Robert Leverich  
Title: *Ways of Knowing*  
Medium: Cascade granite  
Dimensions: 6 ft 6 in x 26 ft 2 in x 24 ft 4 in (overall)



Partner Agency: Tahoma School District  
Hosting Site: Tahoma High School  
Installation date: 9/1/2017  
Artwork cost \$ 20,000.00

Artist: Paul Sorey  
Title: *Flow*  
Medium: Stainless steel  
Dimensions: 30 ft x 80 ft x 2 ft



Partner Agency: Tahoma School District  
Hosting Site: Tahoma High School  
Installation date: 10/20/2017  
Artwork cost \$ 40,000.00

Artist: Paul Sorey  
Title: *Flower*  
Medium: Stainless steel and glass  
Dimensions: 14 ft x 8 ft x 18 ft



Partner Agency: University of Washington  
Hosting Site: University of Washington  
Installation date: 9/24/2017  
Artwork cost \$ 123,507.12

Artist: Norie Sato  
Title: *Seed Clouds*  
Medium: Screenprinted film in laminated glass, painted steel  
Dimensions: 21 ft x 17 ft x 16 ft





Partner Agency: Renton Technical College  
Hosting Site: Renton Technical College  
Installation date: 7/12/2017  
Artwork cost \$ 52,366.38

Artist: Juan Alonso-Rodríguez  
Title: *Hoody*  
Medium: Stainless steel  
Dimensions: 11 ft 6 in x 5 ft 3 in x 6 ft 7 in



Partner Agency: Northshore School District  
Hosting Site: North Creek High School  
Installation date: 11/20/2017  
Artwork cost \$ 13,333.34

Artist: Ries Niemi  
Title: *Big/Little*  
Medium: Stainless steel  
Dimensions: Big chair 7 ft x 3 ft x 3 ft,  
Little chair 3 ft x 1 ft x 1 ft



Partner Agency: Northshore School District  
Hosting Site: North Creek High School  
Installation date: 11/20/2017  
Artwork cost \$ 13,333.33

Artist: Ries Niemi  
Title: *Reactions*  
Medium: Stainless steel  
Dimensions: Three pairs: Small/Tall 4 ft x 2 ft x 2 ft each,  
Expand/Contract 3 ft 6 in x 2 ft x 2 ft each,  
Lean in/Lean out 4 ft x 2 ft x 2 ft each



Partner Agency: Northshore School District  
Hosting Site: North Creek High School  
Installation date: 11/20/2017  
Artwork cost \$ 13,333.33

Artist: Ries Niemi  
Title: *Growth*  
Medium: Stainless steel  
Dimensions: Six chairs ranging in dimensions between  
18 in-6 ft x 6 in-2 ft x 6 in-2 ft



Partner Agency: Central Kitsap School District  
Hosting Site: Jackson Park Elementary  
Installation date: 12/1/2017  
Artwork cost \$ 17,857.14

Artist: Dixie Friend Gay  
Title: *Reality's Illusion*  
Medium: Mosaic on panel  
Dimensions: 4 ft x 4 ft x 1 1/4 in



Partner Agency: Central Kitsap School District  
Hosting Site: Jackson Park Elementary  
Installation date: 12/1/2017  
Artwork cost \$ 17,857.14

Artist: Dixie Friend Gay  
Title: *Reality's Illusion*  
Medium: Mosaic on panel  
Dimensions: 4 ft x 4 ft x 1 1/4 in



Partner Agency: Central Kitsap School District  
Hosting Site: Jackson Park Elementary  
Installation date: 12/1/2017  
Artwork cost \$ 17,857.14

Artist: Dixie Friend Gay  
Title: *Reality's Illusion*  
Medium: Mosaic on panel  
Dimensions: 4 ft x 4 ft x 1 1/4 in



Partner Agency: Central Kitsap School District  
Hosting Site: Jackson Park Elementary  
Installation date: 12/1/2017  
Artwork cost \$ 17,857.14

Artist: Dixie Friend Gay  
Title: *Reality's Illusion*  
Medium: Mosaic on panel  
Dimensions: 4 ft x 4 ft x 1 1/4 in





Partner Agency: Central Kitsap School District  
Hosting Site: Jackson Park Elementary  
Installation date: 12/1/2017  
Artwork cost \$ 17,857.14

Artist: Dixie Friend Gay  
Title: *Reality's Illusion*  
Medium: Mosaic on panel  
Dimensions: 4 ft x 4 ft x 1 1/4 in



Partner Agency: Central Kitsap School District  
Hosting Site: Jackson Park Elementary  
Installation date: 12/1/2017  
Artwork cost \$ 17,857.14

Artist: Dixie Friend Gay  
Title: *Reality's Illusion*  
Medium: Mosaic on panel  
Dimensions: 4 ft x 4 ft x 1 1/4 in



Partner Agency: Central Kitsap School District  
Hosting Site: Jackson Park Elementary  
Installation date: 12/1/2017  
Artwork cost \$ 17,857.14

Artist: Dixie Friend Gay  
Title: *Reality's Illusion*  
Medium: Mosaic on panel  
Dimensions: 4 ft x 4 ft x 1 1/4 in



Partner Agency: Central Kitsap School District  
Hosting Site: Silverdale Elementary  
Installation date: 6/18/2018  
Artwork cost \$ 45,000.00

Artist: Frank Samuelson  
Title: *River, Mountain, Forest*  
Medium: Acrylic on canvas (3 paintings)  
Dimensions: 40 in x 86 in (each)



## Lewis County

---

Partner Agency: White Pass School District  
Hosting Site: White Pass Junior-Senior High School  
Installation date: 7/27/2017  
Artwork cost \$ 50,079.62

Artist: Daniel Galvez  
Title: *Legacy*  
Medium: Acrylic on canvas (5 panels total)  
Dimensions: 11 ft 9 in x 11 ft 5 in each,  
11 ft 9 in x 60 ft 10 in overall



Partner Agency: Centralia College  
Hosting Site: Centralia College  
Installation date: 2/20/2018  
Artwork cost \$ 100,206.71

Artist: John Rogers  
Title: *Lyrical Spirit*  
Medium: Cyan dichroic glass, aluminum, and stainless steel  
Dimensions: 42 ft x 42 ft x 42 ft (overall)



## Skagit County

---

Partner Agency: Sedro-Woolley School District  
Hosting Site: Cascade Middle School  
Installation date: 7/12/2017  
Artwork cost \$ 17,500.00

Artist: Jean Whitesavage and Nick Lyle  
Title: *River Portraits, Starflower*  
Medium: Hand forged steel, powder coat, and paint  
Dimensions: 5 ft 6 in x 5 ft 6 in x 10 in



Partner Agency: Sedro-Woolley School District  
Hosting Site: Cascade Middle School  
Installation date: 7/12/2017  
Artwork cost \$ 17,500.00

Artist: Jean Whitesavage and Nick Lyle  
Title: *River Portraits, Willow & Warbler*  
Medium: Hand forged steel, powder coat, and paint  
Dimensions: 5 ft 6 in x 5 ft 6 in x 10 in



Partner Agency: Sedro-Woolley School District  
Hosting Site: Cascade Middle School  
Installation date: 7/12/2017  
Artwork cost \$ 17,500.00

Artist: Jean Whitesavage and Nick Lyle  
Title: *River Portraits, Spotted Towhee & Bitter Cherry*  
Medium: Hand forged steel, powder coat, and paint  
Dimensions: 5 ft 6 in x 5 ft 6 in x 10 in



Partner Agency: Sedro-Woolley School District  
Hosting Site: Cascade Middle School  
Installation date: 7/12/2017  
Artwork cost \$ 17,500.00

Artist: Jean Whitesavage and Nick Lyle  
Title: *River Portraits, Vine Maple*  
Medium: Hand forged steel, powder coat, and paint  
Dimensions: 5 ft 6 in x 5 ft 6 in x 10 in



Partner Agency: Conway School District  
Hosting Site: Conway K-8  
Installation date: 10/28/2017  
Artwork cost \$ 55,000.00

Artist: Peter Reiquam  
Title: *Bumper Crop*  
Medium: Stainless steel, concrete  
Dimensions: 3 5/8 ft x 12 ft x 12 in



## Snohomish County

---

Partner Agency: Washington State University  
Hosting Site: Washington State University - Everett  
Installation date: 1/20/2018  
Artwork cost \$ 161,500.00

Artist: Paul Vexler  
Title: *Conic Sections*  
Medium: Wood and steel  
Dimensions: 30 ft x 30 ft x 16 ft (overall)



## Spokane County

---

Partner Agency: Spokane School District  
Hosting Site: Hutton Elementary School  
Installation date: 7/29/2017  
Artwork cost \$ 25,000.00

Artist: Michael Dupille  
Title: *Manito Glow*  
Medium: Kiln-formed glass and aluminum  
Dimensions: 6 1/2 ft x 12 1/2 ft x 1 1/2 in



Partner Agency: Spokane School District  
Hosting Site: Hutton Elementary School  
Installation date: 7/30/2017  
Artwork cost \$ 25,000.00

Artist: Michael Dupille  
Title: *Seasonal Prism*  
Medium: Kiln-formed glass and aluminum  
Dimensions: 7 1/2 ft x 34 1/2 ft x 1 1/2 in





## Thurston County

---

Partner Agency: Olympia School District  
Hosting Site: Garfield Elementary  
Installation date: 11/4/2017  
Artwork cost \$ 40,000.00

Artist: Mauricio Robalino  
Title: *A Moment in Time*  
Medium: Glass mosaic  
Dimensions: 8 ft 4 in x 13 ft x 4 in



Partner Agency: The Evergreen State College  
Hosting Site: The Evergreen State College  
Installation date: 6/8/2018  
Artwork Cost: \$443.45

Artist: Carrie L. Larson  
Title: *Specimen Series - 1e. field notes: perspective, long*  
Medium: Typing on rolled paper, graphite, insect pin  
Dimensions: 9 in x 10 in x 2 in (overall)



Partner Agency: The Evergreen State College  
Hosting Site: The Evergreen State College  
Installation date: 6/8/2018  
Artwork Cost: \$443.45

Artist: Carrie L. Larson  
Title: *Specimen Series - 2e. field notes: perspective, short*  
Medium: Typing on rolled paper, insect pin  
Dimensions: 9 in x 10 in x 2 in (overall)



Partner Agency: The Evergreen State College  
Hosting Site: The Evergreen State College  
Installation date: 6/8/2018  
Artwork Cost: \$443.45

Artist: Carrie L. Larson  
Title: *Quietude*  
Medium: watercolor, various papers  
Dimensions: 27 1/2 in x 20 in x 3/4 in (overall)



Partner Agency: The Evergreen State College  
Hosting Site: The Evergreen State College  
Installation date: 6/8/2018  
Artwork Cost: \$830.75

Artist: Jason Sobottka  
Title: *Kevlar Wolves 3.0*  
Medium: Acrylic and screen print on Rives BFK  
Dimensions: 15 in x 22 in (overall)



Partner Agency: The Evergreen State College  
Hosting Site: The Evergreen State College  
Installation date: 6/8/2018  
Artwork Cost: \$830.75

Artist: Jason Sobottka  
Title: *Evolved Elk with Kingfishers 2.0*  
Medium: Acrylic and screen print on Rives BFK  
Dimensions: 15 in x 22 in (overall)



Partner Agency: The Evergreen State College  
Hosting Site: The Evergreen State College  
Installation date: 6/8/2018  
Artwork Cost: \$830.75

Artist: Jason Sobottka  
Title: *Kevlar Wolves 2.0*  
Medium: Acrylic and screen print on Rives BFK  
Dimensions: 15 in x 22 in (overall)



Partner Agency: The Evergreen State College  
Hosting Site: The Evergreen State College  
Installation date: 6/8/2018  
Artwork Cost: \$830.75

Artist: Jason Sobottka  
Title: *Evolved Elk with Kingfishers 3.0*  
Medium: Acrylic and screen print on Rives BFK  
Dimensions: 15 in x 22 in (overall)





Partner Agency: The Evergreen State College  
Hosting Site: The Evergreen State College  
Installation date: 6/8/2018  
Artwork Cost: \$3,326.25

Artist: Cyrra C. Robinson  
Title: *Medusa #3*  
Medium: Bronze  
Dimensions: 10 in x 5 in x 2 in (overall)



Partner Agency: The Evergreen State College  
Hosting Site: The Evergreen State College  
Installation date: 6/8/2018  
Artwork Cost: \$3,326.25

Artist: Cyrra C. Robinson  
Title: *Radiolaria #2*  
Medium: Bronze  
Dimensions: 8 in x 8 in x 4 in (overall)



## Whatcom County

---

Partner Agency: Meridian School District  
Hosting Site: Irene Reither Elementary  
Installation date: 11/15/2017  
Artwork cost \$ 84,981.54

Artist: Greg Ragland  
Title: *H2O-to-O2*  
Medium: Stainless steel  
Dimensions: 29 in x 9 ft x 16 ft



## Whitman County

---

Partner Agency: Pullman School District  
Hosting Site: Pullman High School  
Installation date: 4/4/2018  
Artwork cost \$ 70,000.00

Artist: Etsuko Ichikawa  
Title: *Floating Colors*  
Medium: Cast resin and stainless steel  
Dimensions: 68 in x 16 ft x 4 ft (overall)



# Artwork Expenditures by County FY 2018

This list includes all public art projects receiving any amount of funding during fiscal year 2018 (July 1, 2017 through June 30, 2018). The Expenditures section lists the amount spent during the fiscal year; it does not indicate the final project cost. The Status section includes projects that are installed and completed (“Closed”), in design (“Proposal”), or in fabrication (“Commission”). Please contact AIPP staff for more information on these projects.

Ref. Number	Artist	Project location	Partner Agency	Status	Expenditures
<b>Adams</b>					
WSAC2015.009	Hussey, Aaron	Othello High School	Othello School District	Commission	\$9,247.06
<b>Benton</b>					
WSAC2016.025	Blomberg, Cecilia	Sacajawea Elementary School	Richland School District	Commission	\$18,000.00
WSAC2016.030	Michael Brown and David Cole	Orchard Elementary	Richland School District	Proposal	\$500.00
WSAC2017.001	Bradbury, Jean	Lewis and Clark Elementary School	Richland School District	Commission	\$46,028.11
WSAC2017.003	Sean Healy and Joe Thurston	Marcus Whitman Elementary	Richland School District	Closed	\$21,101.77
WSAC2018.002	Storrs, Anne	Desert Hills Middle School	Kennewick School District	Proposal	\$5,350.00
WSAC2018.004	Voss-Andraea, Julian	Leona Libby Middle School	Richland School District	Proposal	\$2,000.00
<b>Chelan</b>					
WSAC2016.022	Gahan, Elizabeth	Washington Elementary School	Wenatchee School District	Commission	\$24,238.64
WSAC2017.002	Berger, Julie	Department of Transportation - North Central Region, Wenatchee	Department of Transportation	Closed	\$29,998.32

## Clark

WSAC2015.006	Woods, Catherine	Crestline Elementary School	Evergreen School District	Closed	\$27,578.37
WSAC2016.006	Nakamura, Stuart	South Ridge Elementary School	Ridgefield School District	Closed	\$27,657.37
WSAC2016.007	Edwards, Garth	Union Ridge Elementary	Ridgefield School District	Closed	\$40,582.85
WSAC2018.011	Coron, Béatrice	Jemtegaard Middle / Columbia River Gorge Elementary	Washougal School District	Proposal	\$4,250.00

## Franklin

WSAC2017.013	Law, Horatio	Marie Curie STEM Elementary School	Pasco School District	Proposal	\$85.78
WSAC2016.015	Benson, Todd	Columbia Basin College	Columbia Basin College	Closed	\$6,553.75

## Grant

WSAC2014.009	Davis, John	Warden Elementary/Middle/High School	Warden School District	Closed	\$35,870.99
--------------	-------------	--------------------------------------	------------------------	--------	-------------

## Grays Harbor

WSAC2017.020	Eisenhour, David	Ocosta Elementary School	Ocosta School District	Commission	\$35,197.74
--------------	------------------	--------------------------	------------------------	------------	-------------

## King

WSAC2017.009	Hirsch, Alex	Auburn High School	Auburn School District	Commission	\$54,087.88
WSAC2017.011	Bourdette, Christine	Hazel Wolf K-8 School	Seattle Public Schools	Commission	\$3,375.00
WSAC2017.023	Wu, Sumi	Genesee Hill School	Seattle Public Schools	Commission	\$13,495.94
WSAC2017.026	Franklin, David	Seattle World School	Seattle Public Schools	Commission	\$5,350.00
WSAC2017.027	Frugé Brown, Kathleen	Robert Eagle Staff Middle School	Seattle Public Schools	Commission	\$5,450.00
WSAC2017.031	Conner, Elizabeth	DOT – Coleman Ferry Terminal	Department of Transportation	Proposal	\$5,000.00
WSAC2018.001	Kirkpatrick, Kay	Puget Sound Skills Center	Highline School District	Proposal	\$2,250.00
WSAC2018.010	Carl and Sandra Bryant	Arbor Heights Elementary	Seattle Public Schools	Proposal	\$1,750.00
WSAC2018.023	Weiss, Dick	Federal Way High School	Federal Way Public Schools	Proposal	\$1,800.00
WSAC2014.010	Leverich, Robert	Vashon Island High School	Vashon Island School District	Closed	\$77,768.96
WSAC2014.012	Pridgeon, James	Kenmore Junior High School	Northshore School District	Commission	\$500.00
WSAC2016.008	Sato, Norie	University of Washington	University of Washington	Closed	\$79,909.98
WSAC2016.009	Sorey, Paul	Tahoma High School	Tahoma School District	Closed	\$36,505.00
WSAC2016.011	Alonso-Rodríguez, Juan	Renton Technical College	Renton Technical College	Closed	\$4,212.94
WSAC2016.029	Niemi, Ries	North Creek High School	Northshore School District	Closed	\$38,000.00
WSAC2016.031	Bienvenu, Micajah	South Seattle College	South Seattle College	Closed	\$64,893.78

## Kitsap

WSAC2016.001	Point, Susan	Olympic College	Olympic College	Commission	\$3,000.00
WSAC2015.001	Friend Gay, Dixie	Jackson Park Elementary School	Central Kitsap School District	Closed	\$79,146.63
WSAC2017.004	Samuelson, Frank	Silverdale Elementary School	Central Kitsap School District	Closed	\$41,310.12

## Kittitas

WSAC2017.010	Averbuch, Ilan	Central Washington University	Central Washington University	Commission	\$100,281.26
--------------	----------------	-------------------------------	-------------------------------	------------	--------------

## Lewis

WSAC2013.056	Galvez, Daniel	White Pass Junior-Senior High School	White Pass School District	Closed	\$17,312.85
WSAC2017.014	Rogers, John	Centralia College	Centralia College	Closed	\$91,532.32

## Mason

WSAC2016.026	Babcock, Matt	North Mason High School	North Mason School District	Commission	\$23,164.96
WSAC2017.021	Howard, Perri	Hawkins Middle School	North Mason School District	Proposal	\$2,900.00

## Pierce

WSAC2017.006	Ene Osteraas-Constable and Scott Constable	Pierce College - Fort Steilacoom	Pierce College - Fort Steilacoom	Commission	\$8,300.00
WSAC2018.003	Bell, Vaughn	UW Tacoma	University of Washington	Proposal	\$2,849.17
WSAC2017.028	Cheng, Amy	Western State Hospital	Department of Social and Health Services	Proposal	\$3,250.00

## Skagit

WSAC2015.003	Jean Whitesavage and Nick Lyle	Cascade Middle School	Sedro-Woolley School District	Closed	\$24,877.42
WSAC2016.018	Reiquam, Peter	Conway K-8 School	Conway School District	Closed	\$36,045.37

## Snohomish

WSAC2016.028	Frymire, William	Alderwood Middle School	Edmonds School District	Commission	\$32,454.26
WSAC2017.007	Mclsaac, Adam	Lake Stickney Elementary School	Mukilteo School District	Commission	\$4,929.32
WSAC2018.006	Weed, Christopher	Lakewood High School	Lakewood School District	Proposal	\$2,000.00
WSAC2018.007	Feldman, Roger	Marysville-Pilchuck High	Marysville School District	Proposal	\$4,350.00
WSAC2018.012	Sweney, Kate	Lynndale Elementary	Edmonds School District	Proposal	\$2,000.00

WSAC2016.023	Vexler, Paul	Washington State University - North Puget Sound at Everett	Washington State University	Closed	\$150,069.27
--------------	--------------	--	-----------------------------	--------	--------------

## Spokane

WSAC2016.014	Blackwell, Evan	NEWTECH Skill Center	Spokane Public Schools	Commission	\$11,885.24
WSAC2016.017	Kroupa, Ed	Mullan Road Elementary School	Spokane Public Schools	Commission	\$28,997.68
WSAC2016.020	Dupille, Michael	Hutton Elementary School	Spokane Public Schools	Closed	\$13,290.82
WSAC2018.008	Thompson, Cappy	Salk Middle School	Spokane Public Schools	Proposal	\$2,000.00

## Thurston

WSAC2016.012	Brother, Beliz	Washington State Patrol - Budget and Fiscal Services	Department of Enterprise Services	Commission	\$205,007.83
WSAC2016.013	Nakamura, Yuki	The Evergreen State College	The Evergreen State College	Proposal	\$2,750.00
WSAC2017.005	Hansen, Diane	Olympia Regional Learning Academy	Olympia School District	Commission	\$18,632.94
WSAC2016.016	Robalino, Mauricio	Garfield Elementary	Olympia School District	Closed	\$24,463.18
WSAC2018.013	Larson, Carrie L.	Evergreen State College	Evergreen State College	Closed	\$443.45
WSAC2018.014	Larson, Carrie L.	Evergreen State College	Evergreen State College	Closed	\$443.45
WSAC2018.015	Larson, Carrie L.	Evergreen State College	Evergreen State College	Closed	\$443.45
WSAC2018.017	Robinson, Cyrra C.	Evergreen State College	Evergreen State College	Closed	\$3,326.25
WSAC2018.018	Robinson, Cyrra C.	Evergreen State College	Evergreen State College	Closed	\$3,816.25
WSAC2018.019	Sobottka, Jason	Evergreen State College	Evergreen State College	Closed	\$830.75
WSAC2018.020	Sobottka, Jason	Evergreen State College	Evergreen State College	Closed	\$830.75
WSAC2018.021	Sobottka, Jason	Evergreen State College	Evergreen State College	Closed	\$830.75
WSAC2018.022	Sobottka, Jason	Evergreen State College	Evergreen State College	Closed	\$830.75



## Whatcom

WSAC2016.024	Sze, Sarah	Western Washington University	Western Washington University	Commission	\$65,173.69
WSAC2016.019	Ragland, Greg	Irene Reither Elementary	Meridian School District	Closed	\$73,963.08
WSAC2018.024	Rudolph, Glenn	Nooksack Valley Middle School	Nooksack Valley School District	Proposal	\$2,000.00
WSAC2018.009	Wehrle, John	Blaine High School	Blaine School District	Proposal	\$2,000.00

## Whitman

WSAC2017.012	Alexis Gregg and Tanner Coleman	Colton School	Colton School District	Commission	\$4,450.00
WSAC2017.029	Fornes, Marc	Washington State University	Washington State University	Proposal	\$10,000.00
WSAC2016.021	Ichikawa, Etsuko	Pullman High School	Pullman School District	Closed	\$42,893.75

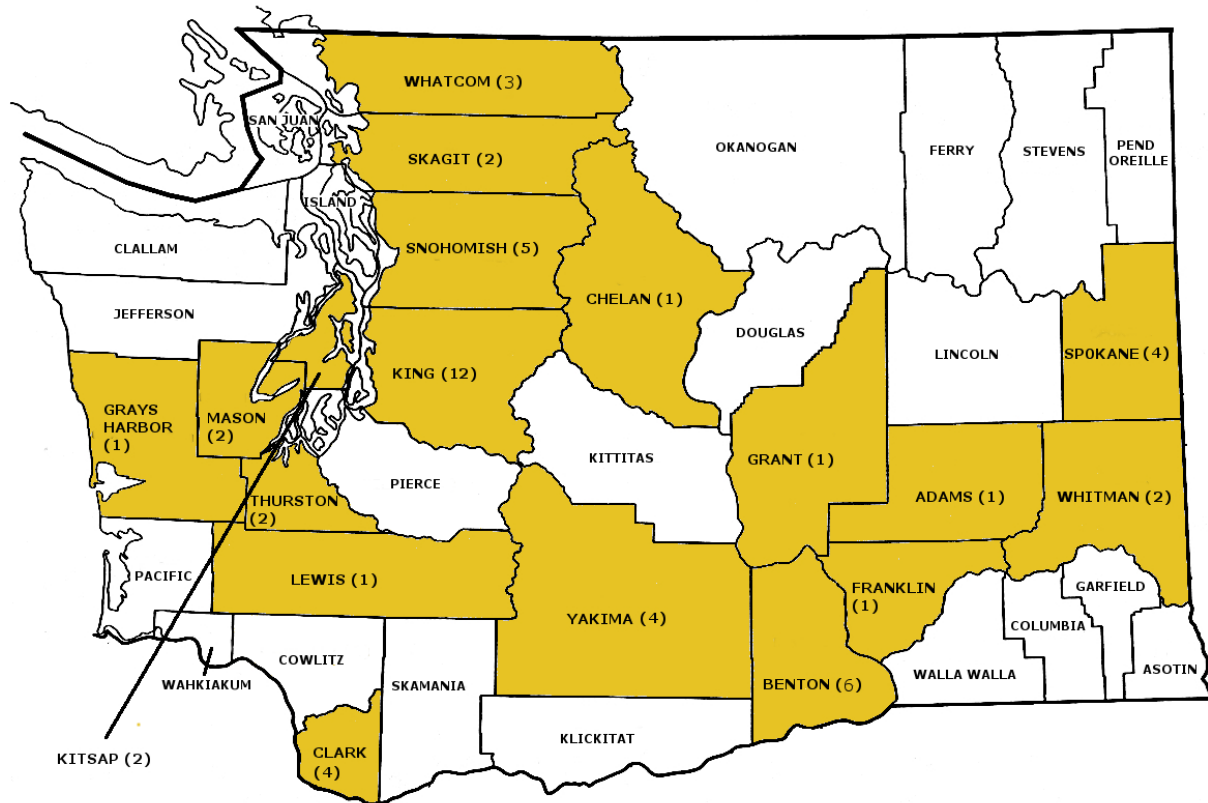
## Yakima

WSAC2017.022	Beecher, Ross Palmer	Washington Elementary	Sunnyside School District	Commission	\$14,815.00
WSAC2017.025	Dillehay, Kyle	Yakima Valley Technical	Sunnyside School District	Proposal	\$3,650.00
WSAC2018.005	Spiering, Ken	Roosevelt Elementary Skills Center - Sunnyside	Granger School District	Proposal	\$2,650.00
WSAC2015.002	Gera Lozano and Werc Alvarez	Davis High School	Yakima School District	Proposal	\$3,500.00

---

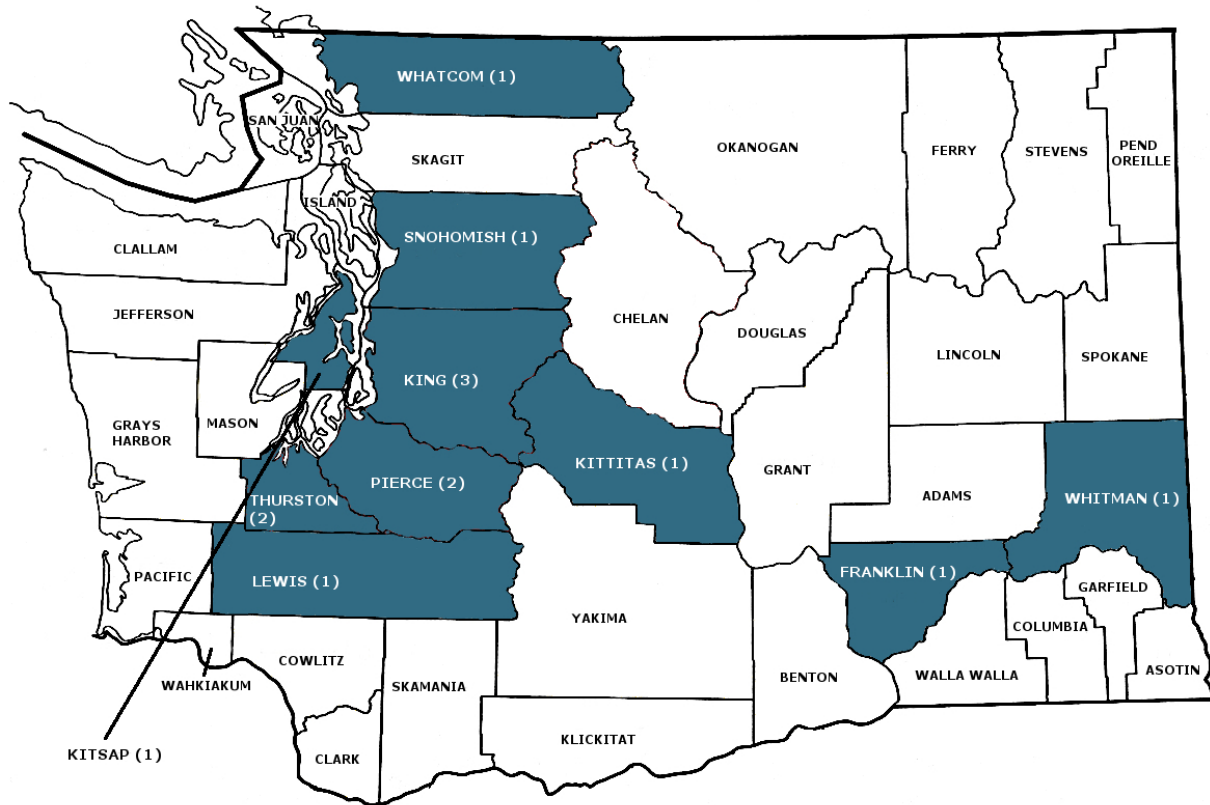
**Grand Total: \$1,902,282.24**

## Artwork Expenditures in FY 2018



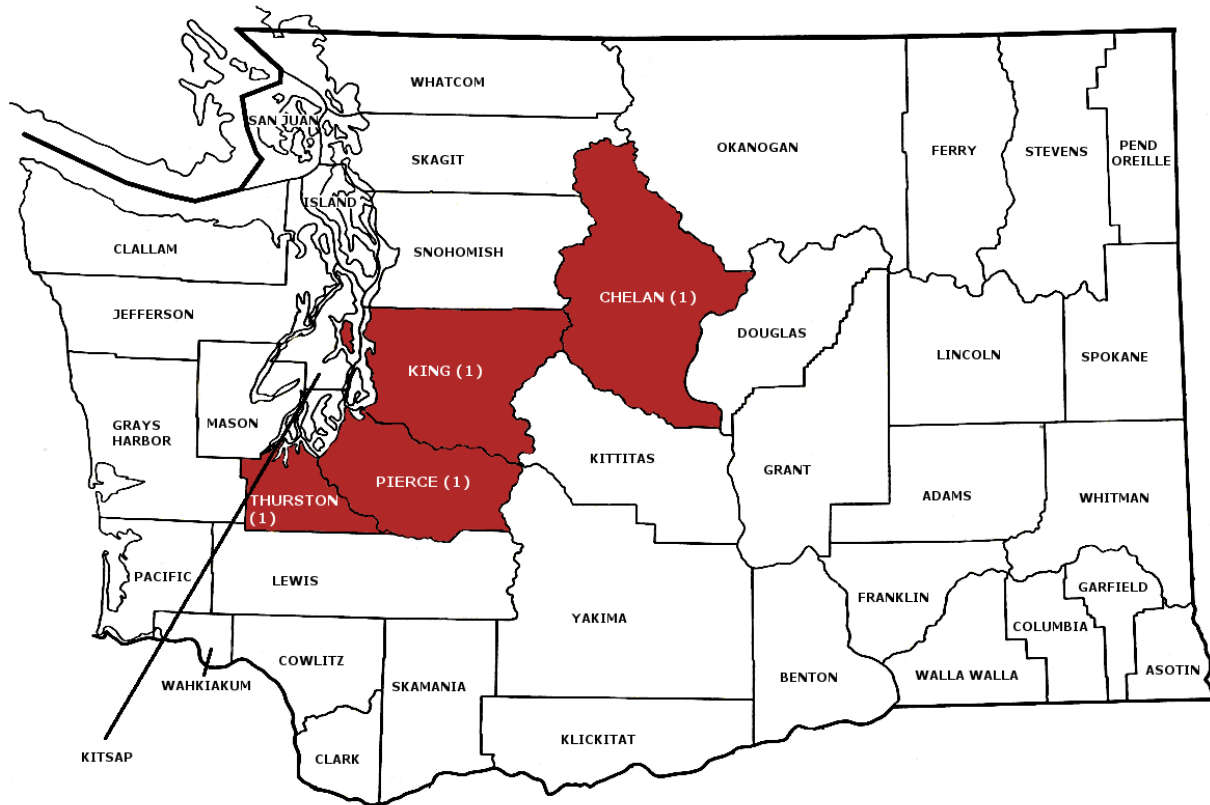
K-12 Public Schools by County

## Artwork Expenditures in FY 2018



### Higher Education by County

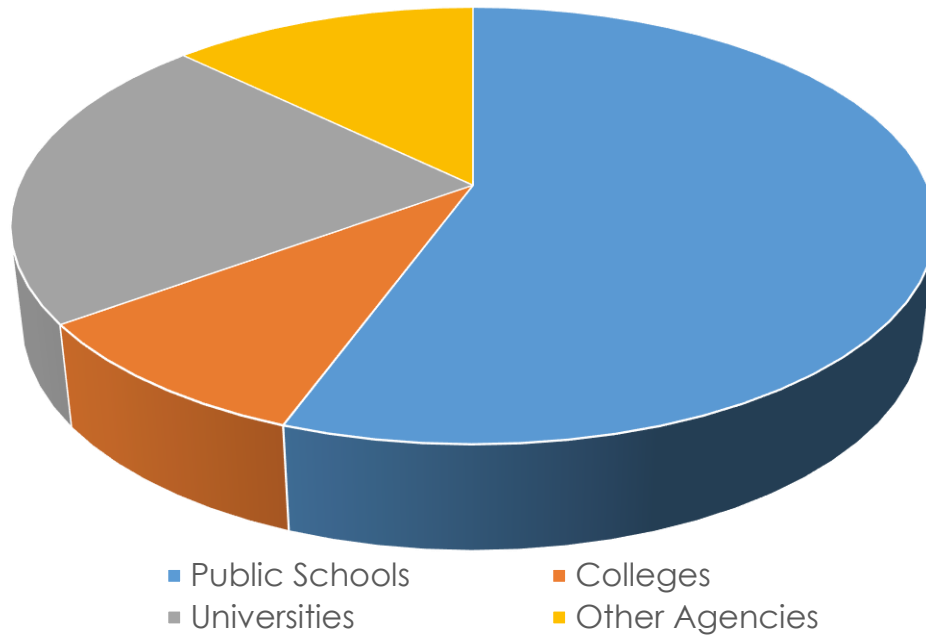
## Artwork Expenditures in FY 2018



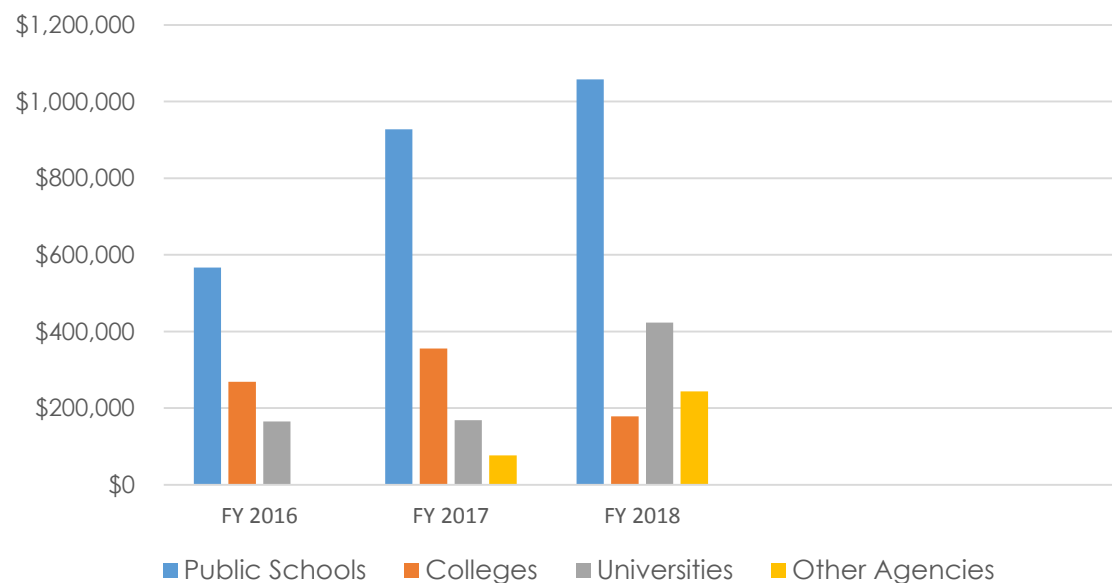
State Agencies by County

## Artwork Expenditures in FY 2018

FY 2018 Funding by Agency Type



FY 2016-18 Funding Distribution by Partner Type





# AIPP Administrative Costs

## Overview

The Art in Public Places program (AIPP) manages the acquisition and care of artworks in the State Art Collection located in public schools, community and technical colleges, public universities, and state agencies throughout Washington.



Daniel Galvez painting a panel of his 5-part mural *Legacy*, 2017, for White Pass Junior/Senior High School, Randle.

Funding for AIPP administrative costs comes from the state's capital appropriations for public art (RCW 43.17.200, 28B.10.027, and 28A.335.210). The current Capital Budget mandates that at least eighty-five percent of capital expenditures are to be spent on artwork acquisitions; the remaining fifteen percent is reserved for program administration.

Administrative costs include salaries and benefits for 4 FTEs, statewide travel, panel convenings, and other related program costs. They do not include the salaries and benefits for the Collections or My Public Art Portal staff, who are funded through the state's general fund. For more information relating to collections costs, please refer to page 40 of this report; My Public Art Portal costs can be found on page 45.

## Biennial Expenditures for AIPP Administration

Object	Description	FY18	FY19*	Total*
A	Salary - Staff (4 FTEs: Prog. Manager, Admin. Assistant, 2 Project Managers)	232,020	250,034	482,054
B	Benefits - Staff	92,359	97,172	189,531
C	Professional Service Contracts (advisory panels)	1,326	2,000	3,326
E	Goods and Other Services (prof. development, communications, software)	7,387	12,649	20,036
G	Travel (statewide, for 3 managers)	14,497	24,900	39,397
J	Non-capitalized Assets (equipment)	0	0	0
		<b>\$347,589</b>	<b>\$386,755</b>	<b>\$734,344</b>

\* FY19 amounts are allotted

## About Art in Public Places

ArtsWA's public art program was established in 1974 by the state legislature, who declared it to be "a policy of this state that a portion of appropriations for capital expenditures be set aside for the acquisition of works of art to be placed in public buildings or lands."

Through an established process that is guided by local decision-making, AIPP brings artwork into public spaces where people study, work, and gather. AIPP has overseen the acquisition of more than 4,700 pieces in the State Art Collection, sited in 1,200 locations throughout the entire state. AIPP partners with public schools, state colleges, public universities, and state agencies to acquire and care for the artwork in their facilities and on their campuses. These partners commit to provide general maintenance of artworks, while AIPP is responsible for the inventory, restoration, and conservation of works in the State Art Collection.



Public art projects contribute to a prosperous economy, enlivening and enriching the built environment, while providing artists and other local professionals (metal fabricators, concrete contractors, structural engineers, installers, etc.) with meaningful employment.

Investment in site-responsive artworks, guided by local decision-making, make our communities more vibrant and livable. Public art engenders a sense of place, of community, of heritage and belonging.

Paul Vexler, *Conic Sections*, 2018.  
Washington State University, Everett Campus.

# AIPP Collection Care

## Overview

The 4,700 artworks that comprise the State Art Collection are located at approximately 1,200 sites throughout Washington, under the day-to-day care of ArtsWA's partner agencies.

ArtsWA is responsible for collection care—including artwork inventory, conservation/restoration, copyright management, record-keeping, and public presentation—as funded by the Legislature.

Conservation—a key facet of collection care—is conducted by ArtsWA's full-time conservation technician and contractors with specialized knowledge. Each plays a critical role in caring for the State Art Collection; staff perform more conservation services at a lower unit cost and contractors provide specialized expertise.

The primary source of funding for contracted conservation activities was capped at \$100,000 per biennium for a decade. It was increased to \$150,000 starting this biennium. The increase will help ArtsWA better meet some of the documented conservation need, but it will not alleviate the problem altogether. It amounts to \$16 per artwork per year to care for the State's \$36 million investment in public art assets. To keep better pace with growing needs, ArtsWA will request an increase to \$200,000 for the 2019-2021 biennium, in addition to a request for an increase to collection care staffing.

## Conservation Activities

ArtsWA's conservation activities range from purchasing plaques that ensure artwork identification to conservation-grade reframing; from meticulous removal of acid from a work-on-paper to major, multi-month artwork repairs of complex outdoor sculpture. Their costs are similarly diverse (from \$300 for reframing to \$30,000 for a complex conservation project requiring a team of professionals).

We undertake these activities with a combination of ArtsWA's full-time conservation technician and contracted conservators with specialized knowledge. Decisions about conservation activities are based on:

- *Availability of in-house expertise:* Is the scope of work within the skillset of ArtsWA's conservation technician?



A contractor performs specialized maintenance on Gloria Bornstein's *Storm Patterns* (2008) as part of a larger repair effort. Maintenance is the key missing link in the care of the State Art Collection. ArtsWA currently delegates it to partner agencies, whose staff do not have the expertise needed to care for unique artworks. When feasible, ArtsWA initiates this kind of care.



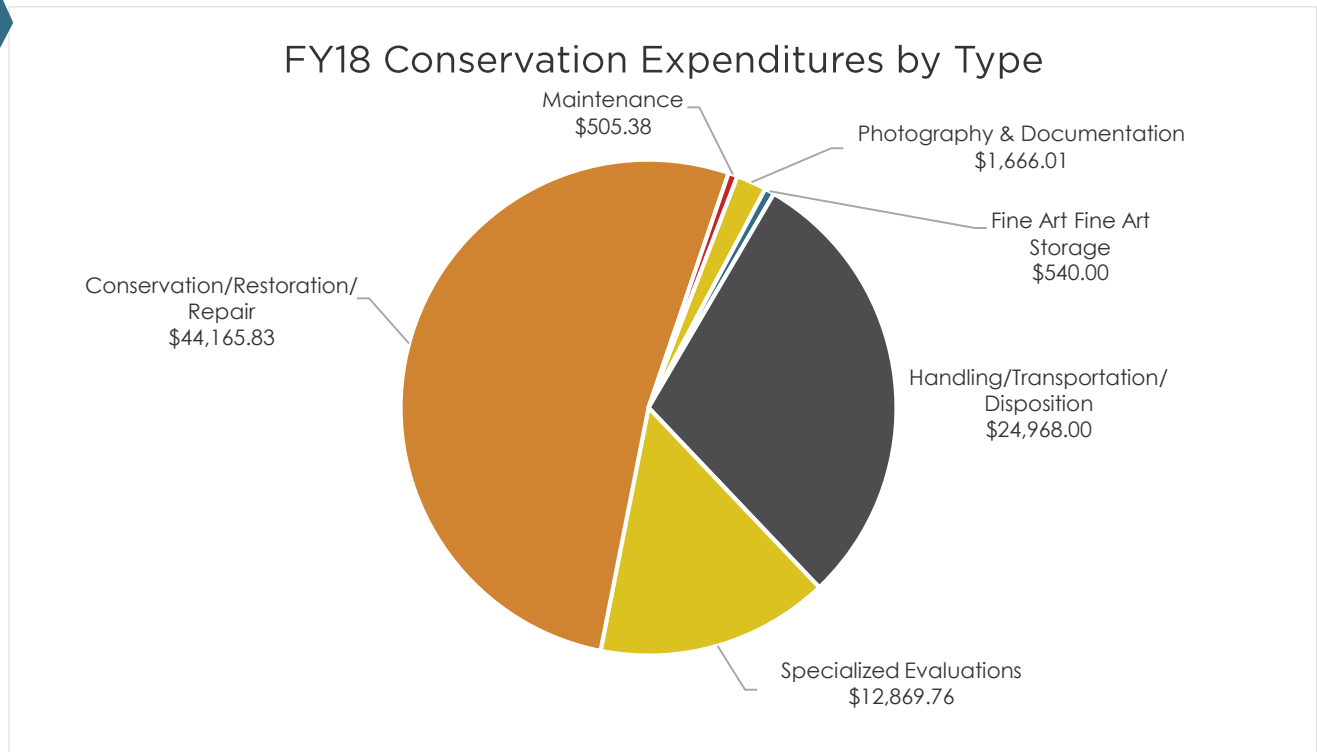
- *Duration of project:* Does the project require a long commitment of time, creating significant additional expense when contracting?
- *Geographic location:* Is it cost effective to send a contracted conservator—most often from Seattle—to Washington’s remote northeast or Olympic Peninsula, for example?

## Biennial Expenditures for Collection Care

The source of all monies expended below is the State General Fund, except for expenditures under Sub-object JM. Per the enacted 2017-2019 Capital Budget, funds designated for artwork acquisition may be expended for artwork maintenance or conservation up to \$150,000 per biennium.

Object	Description	FY18	FY19*
A	Salary - Staff (1.8 FTEs: art collections manager & conservation technician)	102,202	105,228
B	Benefits - Staff (art collections manager & conservation technician)	42,040	43,672
AL	Salary - Work Study Student Employees	5,489	6,612
SA/SB	Salary - Work Study Student Employees (reimbursement)	(3,294)	(4,321)
C	Professional Service Contracts (advisory panels and editing services)	753	750
E	Goods and Other Services (workshop rental and general goods and services)	11,844	8,850
E	(ITMO/ITAC) Goods and Other Services (collections management database)	4,359	5,600
G	Travel (primarily conservation services statewide)	7,104	9,030
JA	Capital Outlays (tools/equipment for collection care and art conservation)	4,158	3,300
JM	Artwork-specific Collection Care and Conservation Services (specialized, contracted services). See category detail in the pie chart below.	84,715	75,000
<b>Total</b>		<b>\$259,370</b>	<b>\$253,721</b>

\* FY19 amounts are allotted



## Conservation Priorities

*ArtsWA's conservation funding does not meet the needs of the aging State Art Collection.* At \$16 per artwork per year (based on legislated conservation spending cap of \$150,000 of Capital Budget funds), the funds must be used for urgent and timely projects, but are not adequate for anticipatory efforts or thoughtful, long-term care strategies.

Established in 2006, the cap on conservation expenditures from the Capital Budget does not include a provision for increase over time, either as related to needs and priorities, or with acknowledgement of an aging collection combined with inflation. It is with this in mind that ArtsWA will request an increase to \$200,000 for the 2019-2021 biennium. Similarly, conservation of the Collection was not funded at all until the mid-1990s, when the Collection was already twenty years old, so much of the needed work represents a backlog in care.



Celebrated Spokane artist Harold Balazs' *Conversation* is among 450+ exterior artworks needing maintenance. Most art conservators are based in Seattle. It costs ArtsWA \$800 for a contracted conservator just to travel to this artwork in Port Angeles. That doesn't include their time to treat the artwork. Travel expenses are magnified for projects in Eastern Washington, where no conservators are based. At \$150/hour, a drive to Spokane and back costs us \$1,200+. Staff work—including salary, benefits, travel, and tools—costs less than ½ this hourly rate.

The Collection is located in highly active public spaces where the value of access to original artwork is prioritized, sometimes at the expense of preservation. In order to effectively use limited conservation funds to protect this cultural asset from deterioration, ArtsWA's collections care activities emphasize:

1. **Preventive conservation activities** such as evaluating artwork materials and fabrication methods during the artwork acquisition phase.
2. **Conservation priorities stated in our collections management policy** ([\*ArtCare\*](#)). The policy prioritizes public safety, needed artwork relocation (often initiated by construction), value of an artwork to the partner agency, and artistic merit.

*Maintenance is the missing link in this strategy.* Maintenance is the most effective preventive conservation method: effective art maintenance prevents the need for more costly and invasive conservation, it reduces the loss of state art assets, and it ensures that artworks reflect well on our state.

ArtsWA's partner agencies—the K-12 public schools, colleges, universities, and state agencies that host State Art Collection works—are, by Interagency Agreement, responsible for the maintenance of artworks sited in their facilities. Sometimes these activities are as simple as dusting, but often, artworks require specialized skillsets not common within partner agencies, such as bronze waxing or conservation-grade reframing. When the skills needed are outside of typical facilities activities, artworks suffer from benign neglect or are damaged by improper maintenance.



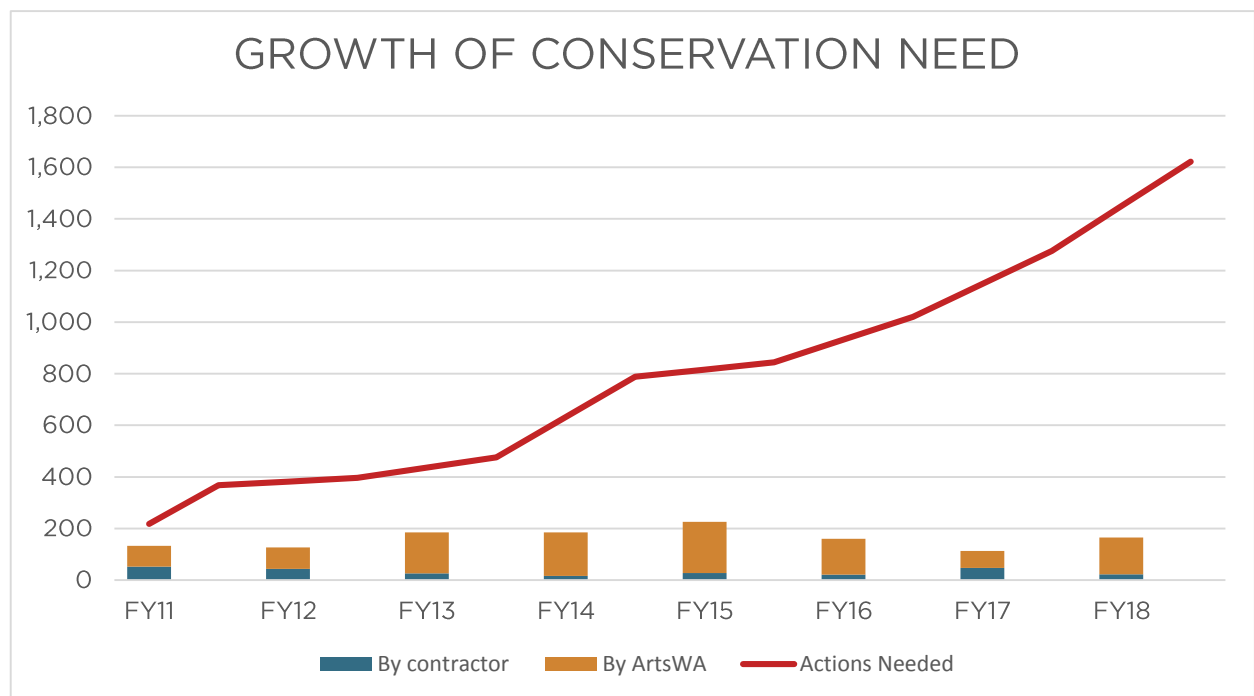
When strategic, ArtsWA initiates maintenance. At this time however, ArtsWA does not have the resources to take the lead on most maintenance activities, which means that they often remain undone.

## Priority Resource Needs

ArtsWA develops its collections management practices to improve the care of the Collection. However, without additional resources, this important state asset will continue to deteriorate. The most critical next steps—informed by third party assessment, strategic planning efforts, and best practices in the field of public art—follow:

1. **Increase conservation/collection care staffing levels:** Staff collection care work is paid at a lower rate than contracted conservation services, even when including salary, benefits, tools, and travel costs. ArtsWA's staff conservation technician position costs approximately \$40 per hour compared to \$150 per hour for contracted conservators. And, while contracted services will continue to play a critical role in the care of the Collection—ArtsWA staff cannot possess the comprehensive expertise needed to care for the large and varied Collection—staff work is an efficient way to manage needs across the state.
2. **Monitor efficacy of conservation funding cap increase.** ArtsWA received an increase to the conservation funding cap in the 2017-2019 Capital Budget. Based on documented need—more than 1,900 conservation needs across the state—ArtsWA anticipates that another increase will be key.

Staff collection care work is paid at a lower rate (\$40/hour) than contracted conservation services (\$150/hour), even when including salary, benefits, tools, and travel costs.



The need for artwork repair and evaluations continues to grow, but staffing levels and contracting dollars to do the work are static. Contracted conservators play an important role in repairing artworks, but staff are able to do more work and at a lower unit cost. To get this red line to trend downward, we need additional staff.

Increasing funds for conservation by raising the cap that restricts conservation expenditures from the Capital Budget impacts artwork acquisitions; funding for conservation is currently taken from funding dedicated to acquiring new artwork. However, *it is also budget neutral—requiring no additional State General Funds—and could therefore be implemented with little complexity*. Much of any funding increase will be focused on preventive activities such as artwork maintenance.

## Ongoing Considerations

The State Art Collection is a valuable cultural asset that enhances our public spaces and reflects who we are as Washingtonians. Its beauty and significance are also part of the complexity of its care.

Artworks are located across Washington, from rainforest to desert, from salt air to freeze/thaw zone. As the Collection ages, it becomes an even more valued reflection of our shared history *and* presents a greater need for maintenance and repair. Similarly, as the Art in Public Places program and the field of public art mature, we are better at gathering information about the state of the Collection, but that also means we know more about problems that need to be addressed. Care needs, once identified, can less easily be ignored or deferred.

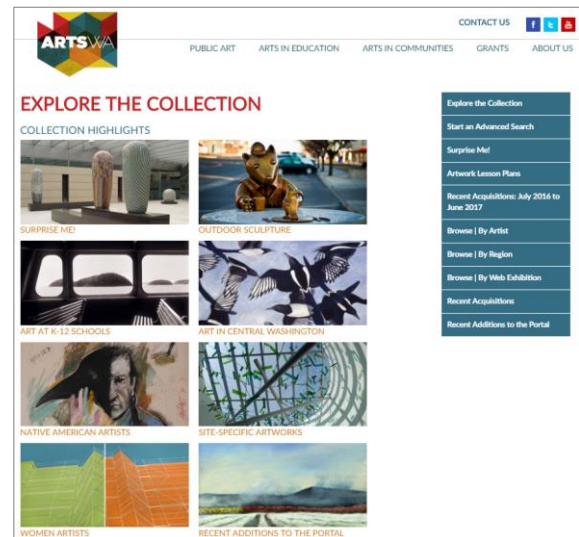
# My Public Art Portal

## Overview

[My Public Art Portal](#) is the online representation of Washington's State Art Collection. It is an easy-to-use and fully searchable website that connects the geographically-widespread collection with the public. As of June 30, 2018, the Portal includes approximately 3,200 artworks, with related maps, images, interpretive text, and more.

The Portal launched as a pilot project in early 2015 with just 10% of the Collection. Its continued and expedited development was supported through the Office of the Chief Information Officer's (OCIO) Information Technology Pool through June 2017. This afforded staff the opportunity to undertake a thorough physical inventory of the entire State Art Collection for the first time since AIPP's inception in 1974, ensuring that the information presented online via My Public Art Portal is accurate, complete, and supported by current photography.

The on-going development work by the Portal team includes verifying and geo-locating exact artwork locations including the building and room; researching and writing about the artworks and artists; and digitizing and photo-editing historic images to improve the quality and quantity of information available to the public. New content was added to the Portal on a regular, weekly rate of approximately 100 artworks per month from July 2017 to June 2018.



This new, image-centric intro webpage to My Public Art Portal highlights web exhibitions and a "Surprise Me!" button that displays a randomly-selected artwork from the State Art Collection. The right-side options offer other ways to search and view the Collection in bite-size chunks. Introduced in October 2017.

## Accomplishments and Challenges

The physical inventory of the State Art Collection was put on hold as AIPP was unable to maintain the Art Inventory Field Worker staff position. The physical inventory of the Collection is essential for the presentation of accurate and complete information and photography on the Portal – as well as for Collection management, maintenance, and conservation work – and it remains a very high priority. The Portal will face a major compromise without the Field Worker's photo-documentation: many artworks will need to be published online with low-quality or outdated photographs, or without photography, until the physical inventory work can be reinstated.

Significant accomplishments in FY2018 included:

- A new, introductory webpage for [My Public Art Portal](#) was launched in October 2017. The revamped design focuses on telling the story of the State Art Collection via visual cues and thematic web exhibitions that allow users to explore within the Collection.
- [Twenty-eight new web exhibitions](#) were created by guest curators and ArtsWA staff. A significant goal of My Public Art Portal is to offer different perspectives of the State Art Collection. Web exhibitions in FY18 also emphasized female artists, Washington state artists, Hispanic artists, and Native-American artists.

- For Arts Education Month in May, the Portal focused on educators. We featured our [existing lesson plans](#), as well as two new web exhibitions [Celebrating All Arts Disciplines](#) and [Visual Arts Elements](#). Highlighted artworks were inspired by and illustrated elements from each arts discipline: dance, media arts, music, theatre, and visual arts. These artworks can be used as tools and examples for a variety of subjects in the classroom.
- “[Beyond Blue Mountains](#)”, a workbook and collection of 92 artworks by Native-Americans, was published online. Originally curated in 1988, this extensive educational resource tells a powerful story and asks significant questions about cultural importance.
- My Public Art Portal participated as a project for a Usability Studies course (HCDE 517) and for the Capstone Projects for the University of Washington’s Human Centered Design & Engineering (HCDE) master’s program. This work will guide the next wave of web interface development during FY19.

## Biennial Expenditures for My Public Art Portal

Object	Description	FY18	FY19*
A	Salary - Staff (Collections Manager oversight plus 1.5 FTEs: Portal Project Manager and Writer-Researcher)	89,623	92,167
B	Benefits - Staff (see above)	41,121	42,806
C	Professional Service Contracts	160	6,745
E	Goods and Other Services	11,600	9,830
E	(ITMO) Goods and Other Services (collections management database	1,640	0
G	Travel (primarily for the physical inventory work)	6,141	780
J	Capital Outlays (tools and equipment for the physical inventory work)	2,975	172
J	(ITMO) Capital Outlays	141	0
<b>Total</b>		<b>\$153,401</b>	<b>\$152,500</b>

\* FY19 amounts are allotted

## Next Steps in FY19 for My Public Art Portal

ArtsWA was successful in securing \$306,000 in funding from the legislature for the 2017-2019 biennium to continue developing My Public Art Portal. Two staff (1.5 FTE) are dedicated to this project.

- Redesign My Public Art Portal’s web interface based on the recommendations and results from the UW HCDE usability and user analysis. The goal is to improve navigation and searching, visually appeal, and engagement.
- Outreach to K-12 educators to promote My Public Art Portal as a teaching resource.
- Ongoing web content development at the rate of publishing 100 new artworks per month.
- Complete the presentation of the State Art Collection as an online, fully searchable, public resource via My Public Art Portal by June 2019.

Washington State is a leader in taking its State Art Collection online in its entirety. This will be a significant achievement among public and private collections nationwide.

# State Art Collection under Contract

## As of August 16, 2018

The list below, sorted by county, reflects public art projects that are either in design (“Proposal”) or are in fabrication (“Commission”). The Artwork Budget is the total amount available at the beginning of the project after AIPP administration and collection care costs have been deducted from the original allocation. The Artwork Budget is inclusive of design, engineering, fabrication, subcontractors, transportation, installation, and other related costs. Please contact AIPP staff for more information on these projects.

### Adams County

---

Partner Agency: Othello School District  
Hosting Site: Othello High School  
Employed Artist: Aaron Hussey  
Project Status: Commission  
Artwork Budget: \$ 77,500.00

### Benton County

---

Partner Agency: Richland School District  
Hosting Site: Sacajawea Elementary  
Employed Artist: Cecilia Blomberg  
Project Status: Commission  
Artwork Budget: \$ 65,000.00

Partner Agency: Richland School District  
Hosting Site: Orchard Elementary  
Employed Artist: Michael Brown and David Cole  
Project Status: Proposal  
Artwork Budget: \$ 55,000.00

Partner Agency: Richland School District  
Hosting Site: Lewis and Clark Elementary School  
Employed Artist: Jean Bradbury  
Project Status: Commission  
Artwork Budget: \$ 55,000.00



Partner Agency: Kennewick School District  
Hosting Site: Desert Hills Middle School  
Employed Artist: Anne Storrs  
Project Status: Proposal  
Artwork Budget: \$ 62,000.00

Partner Agency: Richland School District  
Hosting Site: Leona Libby Middle School  
Employed Artist: Julian Voss-Andreae  
Project Status: Proposal  
Artwork Budget: \$ 71,530.10

## Chelan County

---

Partner Agency: Wenatchee School District  
Hosting Site: Washington Elementary  
Employed Artist: Elizabeth Gahan  
Project Status: Commission  
Artwork Budget: \$ 42,000.00

## Clark County

---

Partner Agency: Washougal School District  
Hosting Site: Jemtegaard Middle School/Columbia River Gorge Elementary  
Employed Artist: Béatrice Coron  
Project Status: Proposal  
Artwork Budget: \$ 60,000.00

## Franklin County

---

Partner Agency: Pasco School District  
Hosting Site: Marie Curie STEM Elementary  
Employed Artist: Horatio Law  
Project Status: Proposal  
Artwork Budget: \$ 65,000.00

## Grant County

---

Partner Agency: Royal School District  
Hosting Site: Royal Intermediate  
Employed Artist: Rob Neilson  
Project Status: Proposal  
Artwork Budget: \$ 55,000.00

## Grays Harbor County

---

Partner Agency: Ocosta School District  
Hosting Site: Ocosta Elementary  
Employed Artist: David Eisenhower  
Project Status: Commission  
Artwork Budget: \$ 55,000.00

## King County

---

Partner Agency: Northshore School District  
Hosting Site: Kenmore Junior High School  
Employed Artist: James Pridgeon  
Project Status: Commission  
Artwork Budget: \$ 40,990.22

Partner Agency: Seattle Public Schools  
Hosting Site: Seattle World School  
Employed Artist: David Franklin  
Project Status: Proposal  
Artwork Budget: \$ 50,000.00

Partner Agency: Seattle Public Schools  
Hosting Site: Hazel Wolf K-8  
Employed Artist: Christine Bourdette  
Project Status: Proposal  
Artwork Budget: \$ 39,909.18

Partner Agency: Auburn School District  
Hosting Site: Auburn High School  
Employed Artist: Alex Hirsch  
Project Status: Commission  
Artwork Budget: \$ 85,000.00

Partner Agency: Seattle Public Schools

Hosting Site: Genesee Hill School

Employed Artist: Sumi Wu

Project Status: Commission

Artwork Budget: \$ 30,481.88

Partner Agency: Seattle Public Schools

Hosting Site: Robert Eagle Staff Middle School

Employed Artist: Kathleen Frugé Brown

Project Status: Commission

Artwork Budget: \$ 30,464.40

Partner Agency: Highline School District

Hosting Site: Puget Sound Skills Center

Employed Artist: Kay Kirkpatrick

Project Status: Proposal

Artwork Budget: \$ 47,981.42

Partner Agency: Federal Way Public Schools

Hosting Site: Federal Way High School

Employed Artist: Dick Weiss

Project Status: Proposal

Artwork Budget: \$ 55,000.00

Partner Agency: Seattle Public Schools

Hosting Site: Arbor Heights Elementary

Employed Artist: Carl Bryant and Sandra Bryant

Project Status: Proposal

Artwork Budget: \$ 39,926.66

Partner Agency: Seattle Public Schools

Hosting Site: Olympic Hills Elementary School

Employed Artist: Brad Rude

Project Status: Proposal

Artwork Budget: \$ 65,000.00

Partner Agency: Enumclaw School District

Hosting Site: Enumclaw High School

Employed Artist: Muckleshoot Indian Tribe

Project Status: Proposal

Artwork Budget: \$ 45,000.00

Partner Agency: Department of Transportation  
Hosting Site: Department of Transportation - Colman Dock Ferry Terminal  
Employed Artist: Elizabeth Conner  
Project Status: Proposal  
Artwork Budget: \$ 125,162.50

## Kitsap County

---

Partner Agency: Olympic College  
Hosting Site: Olympic College  
Employed Artist: Susan Point  
Project Status: Commission  
Artwork Budget: \$ 146,300.43

## Kittitas County

---

Partner Agency: Central Washington University  
Hosting Site: Central Washington University  
Employed Artist: Ilan Averbuch  
Project Status: Commission  
Artwork Budget: \$ 165,890.00

Partner Agency: Ellensburg School District  
Hosting Site: Morgan Middle School  
Employed Artist: Benson Shaw  
Project Status: Proposal  
Artwork Budget: \$ 70,000.00

## Mason County

---

Partner Agency: North Mason School District  
Hosting Site: North Mason High School  
Employed Artist: Matt Babcock  
Project Status: Commission  
Artwork Budget: \$ 42,000.00

Partner Agency: North Mason School District  
Hosting Site: Hawkins Middle School  
Employed Artist: Perri Howard  
Project Status: Proposal  
Artwork Budget: \$ 42,000.00

## Pierce County

---

Partner Agency: Bethel School District  
Hosting Site: Pierce County Skills Center  
Employed Artist: Virginia Paquette  
Project Status: Proposal  
Artwork Budget: \$ 55,000.00

Partner Agency: Pierce College - Fort Steilacoom  
Hosting Site: Pierce College - Fort Steilacoom  
Employed Artist: Ene Osteraas-Constable and Scott Constable  
Project Status: Commission  
Artwork Budget: \$80,306.30

Partner Agency: Department of Social and Health Services  
Hosting Site: Western State Hospital  
Employed Artist: Amy Cheng Project  
Status: Proposal Artwork  
Budget: \$ 72,675.00

Partner Agency: University of Washington  
Hosting Site: University of Washington - Tacoma  
Employed Artist: Vaughn Bell  
Project Status: Proposal  
Artwork Budget: \$ 61,935.25

## Snohomish County

---

Partner Agency: Edmonds School District  
Hosting Site: Alderwood Middle School  
Employed Artist: William Frymire  
Project Status: Commission  
Artwork Budget: \$ 60,000.00

Partner Agency: Mukilteo School District  
Hosting Site: Lake Stickney Elementary  
Employed Artist: Adam McIsaac  
Project Status: Commission  
Artwork Budget: \$ 55,000.00



Partner Agency: Marysville School District  
Hosting Site: Marysville-Pilchuck High School  
Employed Artist: Roger Feldman  
Project Status: Proposal  
Artwork Budget: \$ 60,000.00

Partner Agency: Lakewood School District  
Hosting Site: Lakewood High School  
Employed Artist: Christopher Weed  
Project Status: Proposal  
Artwork Budget: \$ 60,000.00

Partner Agency: Edmonds School District  
Hosting Site: Lynndale Elementary  
Employed Artist: Kate Sweeney  
Project Status: Proposal  
Artwork Budget: \$ 50,000.00

## Spokane County

---

Partner Agency: Spokane Public Schools  
Hosting Site: NEWTECH Skill Center  
Employed Artist: Evan Blackwell  
Project Status: Commission  
Artwork Budget: \$ 40,000.00

Partner Agency: Spokane Public Schools  
Hosting Site: Mullan Road Elementary  
Employed Artist: Ed Kroupa  
Project Status: Commission  
Artwork Budget: \$ 50,000.00

Partner Agency: Spokane Public Schools  
Hosting Site: Salk Middle School  
Employed Artist: Cappy Thompson  
Project Status: Proposal  
Artwork Budget: \$ 65,000.00

Partner Agency: Community Colleges of Spokane  
Hosting Site: Spokane Community College  
Employed Artist: Judith Caldwell and Daniel Caldwell  
Project Status: Proposal  
Artwork Budget: \$ 72,309.20

## Thurston County

---

Partner Agency: The Evergreen State College  
Hosting Site: The Evergreen State College  
Employed Artist: Yuki Nakamura  
Project Status: Proposal  
Artwork Budget: \$ 46,114.71

Partner Agency: Department of Enterprise Services  
Hosting Site: Washington State Patrol - Budget and Fiscal Services, Olympia  
Employed Artist: Beliz Brother  
Project Status: Commission  
Artwork Budget: \$ 232,260.42

Partner Agency: Olympia School District  
Hosting Site: Olympia Regional Learning Academy  
Employed Artist: Diane Hansen  
Project Status: Commission  
Artwork Budget: \$ 55,000.00

## Whatcom County

---

Partner Agency: Whatcom Community College  
Hosting Site: Whatcom Community College  
Employed Artist: Erin Palmer  
Project Status: Proposal  
Artwork Budget: \$ 86,487.50

Partner Agency: Western Washington University  
Hosting Site: Western Washington University  
Employed Artist: Sarah Sze  
Project Status: Commission  
Artwork Budget: \$ 204,260.35

Partner Agency: Nooksack Valley School District  
Hosting Site: Nooksack Valley Middle School  
Employed Artist: Glenn Rudolph  
Project Status: Proposal  
Artwork Budget: \$ 45,000.00

Partner Agency: Blaine School District  
Hosting Site: Blaine High School  
Employed Artist: John Wehrle  
Project Status: Proposal  
Artwork Budget: \$ 50,000.00

## Whitman County

---

Partner Agency: Colton School District  
Hosting Site: Colton School  
Employed Artist: Alexis Gregg and Tanner Coleman  
Project Status: Commission  
Artwork Budget: \$ 55,000.00

Partner Agency: Washington State University  
Hosting Site: Washington State University  
Employed Artist: Marc Fornes  
Project Status: Proposal  
Artwork Budget: \$ 325,000.00

## Yakima County

---

Partner Agency: Yakima School District  
Hosting Site: Eisenhower High School  
Employed Artist: Jack Archibald  
Project Status: Commission  
Artwork Budget: \$ 76,082.56

Partner Agency: Yakima School District  
Hosting Site: Davis High School  
Employed Artist: Gera Lozano and Werc Alvarez  
Project Status: Proposal  
Artwork Budget: \$ 80,000.00

Partner Agency: Sunnyside School District  
Hosting Site: Yakima Valley Technical Skills Center - Sunnyside  
Employed Artist: Kyle Dillehay  
Project Status: Proposal  
Artwork Budget: \$ 40,000.00

Partner Agency: Sunnyside School District  
Hosting Site: Washington Elementary  
Employed Artist: Ross Palmer Beecher  
Project Status: Commission  
Artwork Budget: \$ 42,000.00

Partner Agency: Granger School District  
Hosting Site: Roosevelt Elementary School  
Employed Artist: Ken Spiering  
Project Status: Proposal  
Artwork Budget: \$ 80,000.00